

LY6E Rabbit pAb

货号: **AYP20160**

产品信息

反应	Human,Mouse,Rat
宿主	Rabbit
克隆性	Polyclonal
预测反应	
应用	WB IF/ICC
推荐浓度	WB: 1:500 - 1:1000 IF/ICC: 1:50 - 1:200
理论分子量	13kDa
实测分子量	14KDa
形式	Liquid
保存条件	Store at -20°C. Avoid freeze / thaw cycles. Buffer: PBS with 0.02% sodium azide,50% glycerol,pH7.3.
偶联物	Unconjugated
阳性对照	Rat lung
细胞定位	Cell membrane,GPI-anchor,Lipid-anchor
纯化	Affinity purification

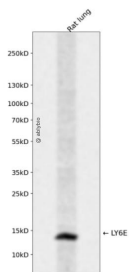
抗原信息

抗原信息	Recombinant fusion protein containing a sequence corresponding to amino acids 21-101 of human LY6E (NP_002337.1).
序列	LMCFSCLNQKSNLYCLKPTICSDQDNYCVTVSASAGIGNLVTFGHLSKTCSPACPIPEGVNVGVASMGISCCQSFLCNFS

靶点信息

研究背景	GPI-anchored cell surface protein that regulates T-lymphocytes proliferation, differentiation, and activation. Regulates the T-cell receptor (TCR signaling by interacting with component CD3Z/CD247 at the plasma membrane, leading to CD3Z/CD247 phosphorylation modulation (By similarity. Restricts the entry of human coronaviruses, including SARS-CoV, MERS-CoV and SARS-CoV-2, by interfering with spike protein-mediated membrane fusion. Plays also an essential role in placenta formation by acting as the main receptor for syncytin-A (SynA. Therefore, participates in the normal fusion of syncytiotrophoblast layer I (SynT-I and in the proper morphogenesis of both fetal and maternal vasculatures within the placenta. May also act as a modulator of nicotinic acetylcholine receptors (nAChRs activity (By similarity.
基因ID	4061
基因名	LY6E
Swiss	Q16553
别名	LY6E;RIG-E;RIGE;SCA-2;SCA2;TSA-1

产品验证



Western blot analysis of LY6E expressed in Rat lung using LY6E Rabbit pAb at 1:1000. Secondary antibody : HRP Goat Anti-Rabbit IgG (H+L) at 1:5000. Lysates/proteins: 30ug per lane. Blocking buffer: 5% non-fat dry milk in TBST. Detection: ECL Enhanced Kit. Exposure time: 120s.

实验步骤

访问官网浏览详情: www.ablybio.cn