

PCDH1 Rabbit pAb

货号: **AYP20159**

产品信息

反应	Human,Mouse
宿主	Rabbit
克隆性	Polyclonal
预测反应	
应用	WB
推荐浓度	WB: 1:1000 - 1:2000
理论分子量	114kDa/133kDa
实测分子量	115kDa
形式	Liquid
保存条件	Store at -20°C. Avoid freeze / thaw cycles. Buffer: PBS with 0.02% sodium azide,50% glycerol,pH7.3.
偶联物	Unconjugated
阳性对照	U-87MG,LO2,HeLa,SW480,BT-474
细胞定位	Cell junction,Cell membrane,Single-pass type I membrane protein
纯化	Affinity purification

抗原信息

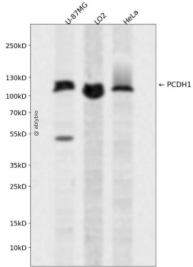
抗原信息	Recombinant fusion protein containing a sequence corresponding to amino acids 60-220 of human PCDH 1 (NP_002578.2).
序列	VVYKVPPEEQPPNTLIGSLAADYGFPDVGHLKLEVGAPYLRVDGKTGDIFTTETSIDREGLRECQNQLPGDPCILEFEVSITD LVQNGSPRLLEGQIEVQDINDNTPNFASPVITLAIPENTNIGSLFPIPLASDRDAGPNGVASYELQAGPEAQELFGLQ

靶点信息

研究背景	This gene belongs to the protocadherin subfamily within the cadherin superfamily. The encoded protein is a membrane protein found at cell-cell boundaries. It is involved in neural cell adhesion, suggesting a possible role in neuronal development. The protein includes an extracellular region, containing 7 cadherin-like domains, a transmembrane region and a C-terminal cytoplasmic region. Cells expressing the protein showed cell aggregation activity. Alternative splicing occurs in this gene.
基因ID	5097

基因名	PCDH1
Swiss	Q08174
别名	PCDH1;PC42;PCDH42

产品验证



Western blot analysis of PCDH1 expressed in U-87MG,LO2,HeLa using PCDH1 Rabbit pAb at 1:1000. Secondary antibody: HRP Goat Anti-Rabbit IgG (H+L) at 1:5000. Lysates/proteins: 30ug per lane. Blocking buffer: 5% non-fat dry milk in TBST. Detection: ECL Enhanced Kit. Exposure time: 120s.

实验步骤

访问官网浏览详情: www.ablybio.cn