

SLC15A1 Rabbit pAb

货号: AYP20158

产品信息

反应	Human,Mouse,Rat
宿主	Rabbit
克隆性	Polyclonal
预测反应	
应用	WB
推荐浓度	WB: 1:500 - 1:2000
理论分子量	78kDa
实测分子量	78kDa
形式	Liquid
保存条件	Store at -20°C. Avoid freeze / thaw cycles. Buffer: PBS with 0.02% sodium azide,50% glycerol,pH7.3.
偶联物	Unconjugated
阳性对照	Mouse lung,Rat testis
细胞定位	Membrane,Multi-pass membrane protein
纯化	Affinity purification

抗原信息

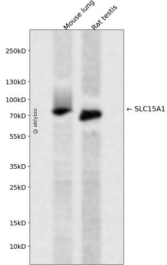
抗原信息	A synthetic peptide corresponding to a sequence within amino acids 600-700 of human SLC15A1 (NP_005064.1).
序列	VTGLEFSYSQAPSNMKSVLQAGWLLTVAVGNIIVLIVAGAGQFSKQWAEYILFAALLLVVCVIFAIMARFYTYINPAEIEAQFDEDEKKNRLEKSNPYFMS

靶点信息

研究背景	This gene encodes an intestinal hydrogen peptide cotransporter that is a member of the solute carrier family 15. The encoded protein is localized to the brush border membrane of the intestinal epithelium and mediates the uptake of di- and tripeptides from the lumen into the enterocytes. This protein plays an important role in the uptake and digestion of dietary proteins. This protein also facilitates the absorption of numerous peptidomimetic drugs.
基因ID	6564

基因名	SLC15A1
Swiss	P46059
别名	SLC15A1;HPECT1;HPEPT1;PEPT1

产品验证



Western blot analysis of SLC15A1 expressed in Mouse lung,Rat testis using SLC15A1 Rabbit pAb at 1:1000. Secondary antibody: HRP Goat Anti-Rabbit IgG (H+L) at 1:5000. Lysates/proteins: 30ug per lane. Blocking buffer: 5% non-fat dry milk in TBST. Detection: ECL Enhanced Kit. Exposure time: 120s.

实验步骤

访问官网浏览详情: www.ablybio.cn