

SLC1A7 Rabbit pAb

货号: AYP20156

产品信息

反应	Mouse
宿主	Rabbit
克隆性	Polyclonal
预测反应	
应用	WB
推荐浓度	WB: 1:500 - 1:2000
理论分子量	17kDa/60kDa
实测分子量	75kDa
形式	Liquid
保存条件	Store at -20°C. Avoid freeze / thaw cycles. Buffer: PBS with 0.02% sodium azide,50% glycerol,pH7.3.
偶联物	Unconjugated
阳性对照	Mouse eye
细胞定位	Membrane,Multi-pass membrane protein
纯化	Affinity purification

抗原信息

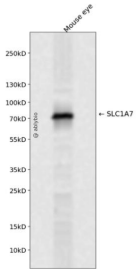
抗原信息	Recombinant fusion protein containing a sequence corresponding to amino acids 115-220 of human SLC1A7 (NP_006662.3).
序列	HPGSAAQKETTEQSGKPIMSSADALLDLIRNMFANLVEATFKQYRTKTPVVKSPKVAPEEAPRRILIYGVQEENGSHVQNFALDLTPPPEVVYKSEPGTSDGM

靶点信息

研究背景	Transports L-glutamate; the L-glutamate uptake is sodium- and voltage-dependent and chloride-independent. Its associated chloride conductance may participate in visual processing.
基因ID	6512
基因名	SLC1A7

Swiss	O00341
别名	SLC1A7;AAAT;EAAT5

产品验证



Western blot analysis of SLC1A7 expressed in Mouse eye using SLC1A7 Rabbit pAb at 1:1000. Secondary antibody: HRP Goat Anti-Rabbit IgG (H+L) at 1:5000. Lysates/proteins: 30ug per lane. Blocking buffer: 5% non-fat dry milk in TBST. Detection: ECL Enhanced Kit. Exposure time: 120s.

实验步骤

访问官网浏览详情: www.ablybio.cn