

TRHDE Rabbit pAb

货号: **AYP20133**

产品信息

反应	Human
宿主	Rabbit
克隆性	Polyclonal
预测反应	
应用	WB
推荐浓度	WB: 1:200 - 1:2000
理论分子量	117kDa
实测分子量	117kDa
形式	Liquid
保存条件	Store at -20°C. Avoid freeze / thaw cycles. Buffer: PBS with 0.02% sodium azide,50% glycerol,pH7.3.
偶联物	Unconjugated
阳性对照	22Rv1
细胞定位	Membrane,Single-pass type II membrane protein
纯化	Affinity purification

抗原信息

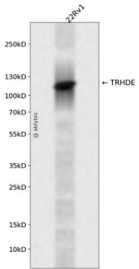
抗原信息	Recombinant fusion protein containing a sequence corresponding to amino acids 62-200 of human TRHDE (NP_037513.1).
序列	SLRFDECGASATPGADGGPSGFPERGGNGSLPGSARRNHHAGGDSWQPEAGGVASPGTTSAQPPSEEEEREPWEPWTQLRLSGHLKPLHYNLMLTAFMENFTFSGEVNVEIACRNATRYVVLHASRVAVEKVKVLAEDRAF

靶点信息

研究背景	This gene encodes a member of the peptidase M1 family. The encoded protein is an extracellular peptidase that specifically cleaves and inactivates the neuropeptide thyrotropin-releasing hormone.
基因ID	29953
基因名	TRHDE

Swiss	Q9UKU6
别名	TRHDE;PAP-II;PGPEP2;TRH-DE

产品验证



Western blot analysis of TRHDE expressed in 22Rv1 using TRHDE Rabbit pAb at 1:1000. Secondary antibody: HRP Goat Anti-Rabbit IgG (H+L) at 1:5000. Lysates/proteins: 30ug per lane. Blocking buffer: 5% non-fat dry milk in TBST. Detection: ECL Enhanced Kit. Exposure time: 120s.

实验步骤

访问官网浏览详情: www.ablybio.cn