

# SPSB1 Rabbit pAb

货号: **AYP20125**

## 产品信息

反应	Human,Mouse
宿主	Rabbit
克隆性	Polyclonal
预测反应	
应用	WB
推荐浓度	<b>WB:</b> 1:500 - 1:2000
理论分子量	30kDa
实测分子量	31kDa
形式	Liquid
保存条件	Store at -20°C. Avoid freeze / thaw cycles. Buffer: PBS with 0.02% sodium azide,50% glycerol,pH7.3.
偶联物	Unconjugated
阳性对照	Mouse heart
细胞定位	Cytoplasm
纯化	Affinity purification

## 抗原信息

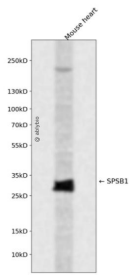
抗原信息	Recombinant fusion protein containing a sequence corresponding to amino acids 1-273 of human SPSB1 ( Q96BD6).
序列	MGQKVTGGIKTVDMRDPTYRPLKQELQGLDYCKPTRLDLLDMPPVSYDVQLLSWNNNDRSLNVFKEDDKLIFHRHP VAQSTDAIRGKVGYTRGLHVWQITWAMRQRGTHAVVGVATADAPLHSVGYTTLVGNNHESWGWDLGRNRLYHDGKN QPSKTYPAFLEPDETFFIVPDSFLVALDMDDGTLFIVDGQYMGVAFRGLKGGKLYPVVSAVWGHCEIRMRYLNGLDPEPLP LMDLCRRSVRLALGRERLGEIHTLPLPASLKAYLLYQ

## 靶点信息

研究背景	Substrate recognition component of a SCF-like ECS (Elongin BC-CUL2/5-SOCS-box protein E3 ubiquitin-protein ligase complex which mediates the ubiquitination and subsequent proteasomal degradation of target proteins. Negatively regulates nitric oxide (NO) production and limits cellular toxicity in activated macrophages by mediating the ubiquitination and proteasomal degradation of NOS2. Acts as a bridge which links NOS2 with the ECS E3 ubiquitin ligase complex components ELOC and CUL5.
------	----------------------------------------------------------------------------------------------------------------------------------------------------------------------------------------------------------------------------------------------------------------------------------------------------------------------------------------------------------------------------------------------------------------------------------------------------------------------------------------------------------

基因ID	80176
基因名	SPSB1
Swiss	Q96BD6
别名	SPSB1;SSB-1;SSB1

## 产品验证



Western blot analysis of SPSB1 expressed in Mouse heart using SPSB1 Rabbit pAb at 1:1000. Secondary antibody: HRP Goat Anti-Rabbit IgG (H+L) at 1:5000. Lysates/proteins: 30ug per lane. Blocking buffer: 5% non-fat dry milk in TBST. Detection: ECL Enhanced Kit. Exposure time: 120s.

## 实验步骤

访问官网浏览详情: [www.ablybio.cn](http://www.ablybio.cn)