

SLC26A6 Rabbit pAb

货号: **AYP20124**

产品信息

| | |
|-------|--|
| 反应 | Human,Mouse |
| 宿主 | Rabbit |
| 克隆性 | Polyclonal |
| 预测反应 | |
| 应用 | WB |
| 推荐浓度 | WB: 1:500 - 1:2000 |
| 理论分子量 | 73kDa/76kDa/79kDa/80kDa/82kDa |
| 实测分子量 | 110kDa |
| 形式 | Liquid |
| 保存条件 | Store at -20°C. Avoid freeze / thaw cycles. Buffer: PBS with 0.02% sodium azide,50% glycerol,pH7.3. |
| 偶联物 | Unconjugated |
| 阳性对照 | 293T |
| 细胞定位 | Apical cell membrane,Basolateral cell membrane,Cell membrane,Cytoplasmic vesicle membrane,Membrane,Microsome,Multi-pass membrane protein |
| 纯化 | Affinity purification |

抗原信息

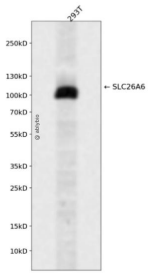
| | |
|------|--|
| 抗原信息 | Recombinant fusion protein containing a sequence corresponding to amino acids 509-758 of human SLC26A6 (NP_599025.2). |
| 序列 | QMPHYSVLGQVPDPTDIYRDVAEYSEAKEVRGVKVFRRSSATVYFANAEFYSDALKQRCGVDDVDFLISQKKKLLKQEQKLKQLQKEEKLKQAASPKGASVSIINVNTSLEDMRSNNVEDCKMMVSSGDKMEDATANGQEDSKAPDGSTLKALGLPQPDFHSLILDGALSFVDTVCLKSLKNIFHDFREIEVEVYMAACHSPVVSQLEAGHFFDASITKKHLFASVHDAVTFALQHPRPVPDSPSVVTRL |

靶点信息

| | |
|------|--|
| 研究背景 | This gene belongs to the solute carrier 26 family, whose members encode anion transporter proteins. This particular family member encodes a protein involved in transporting chloride, oxalate, sulfate and bicarbonate. Alternatively spliced transcript variants encoding distinct isoforms have been described. |
|------|--|

| | |
|-------|---------|
| 基因ID | 65010 |
| 基因名 | SLC26A6 |
| Swiss | Q9BXS9 |
| 别名 | SLC26A6 |

产品验证



Western blot analysis of SLC26A6 expressed in 293T using SLC26A6 Rabbit pAb at 1:1000. Secondary anti body: HRP Goat Anti-Rabbit IgG (H+L) at 1:5000. Lysates/proteins: 30ug per lane. Blocking buffer: 5% n-fat dry milk in TBST. Detection: ECL Enhanced Kit. Exposure time: 120s.

实验步骤

访问官网浏览详情: www.ablybio.cn