

LEPRE1 Rabbit pAb

货号: **AYP20123**

产品信息

反应	Human,Mouse
宿主	Rabbit
克隆性	Polyclonal
预测反应	
应用	WB
推荐浓度	WB: 1:1000 - 1:2000
理论分子量	41kDa/78kDa/83kDa/90kDa
实测分子量	100kDa
形式	Liquid
保存条件	Store at -20°C. Avoid freeze / thaw cycles. Buffer: PBS with 0.02% sodium azide,50% glycerol,pH7.3.
偶联物	Unconjugated
阳性对照	A375,NCI-H460,HT-29,HeLa,SKOV3
细胞定位	Endoplasmic reticulum,Secreted,extracellular matrix,extracellular space
纯化	Affinity purification

抗原信息

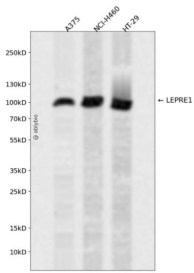
抗原信息	Recombinant fusion protein containing a sequence corresponding to amino acids 497-736 of human LEPR E1 (NP_071751.3).
序列	GDGYRGQTSPTNEKFGVTVFKALKLGQEGKVPLQSAHLYNVTEKVRIMESYFRLDTPLYFSYSHLVCRTAIEEVQAE RKDDSHPVHVDNCILNAETLVCVKEPPAYTFRDYSAILYLNGDFDGGNFYFTELDAKTVTAEVQPQCGRVGFSSGTENP HGVKAVTRGQRCAIALWFTLDRHSERDRVQADDLVKMLFSPEEMDLSQEQPLDAQQPPEPAQESLSGSES KPKDEL

靶点信息

研究背景	This gene encodes an enzyme that is a member of the collagen prolyl hydroxylase family. These enzymes are localized to the endoplasmic reticulum and their activity is required for proper collagen synthesis and assembly. Mutations in this gene are associated with osteogenesis imperfecta type VIII. Three alternatively spliced transcript variants encoding different isoforms have been described. Other variants may exist, but their biological validity has not been determined.
------	---

基因ID	64175
基因名	P3H1
Swiss	Q32P28
别名	P3H1;GROS1;LEPRE1;OI8

产品验证



Western blot analysis of LEPRE1 expressed in A375,NCI-H460,HT-29 using LEPRE1 Rabbit pAb at 1:1000. Secondary antibody: HRP Goat Anti-Rabbit IgG (H+L) at 1:5000. Lysates/proteins: 30ug per lane. Blocking buffer: 5% non-fat dry milk in TBST. Detection: ECL Enhanced Kit. Exposure time: 120s.

实验步骤

访问官网浏览详情: www.ablybio.cn