

# SLAMF6 Rabbit pAb

货号: **AYP20115**

## 产品信息

反应	Human,Mouse,Rat
宿主	Rabbit
克隆性	Polyclonal
预测反应	
应用	WB
推荐浓度	<b>WB:</b> 1:100 - 1:500
理论分子量	24kDa/37kDa
实测分子量	60KDa
形式	Liquid
保存条件	Store at -20°C. Avoid freeze / thaw cycles. Buffer: PBS with 0.02% sodium azide,50% glycerol,pH7.3.
偶联物	Unconjugated
阳性对照	Ramos,Daudi
细胞定位	Cell membrane,Single-pass type I membrane protein
纯化	Affinity purification

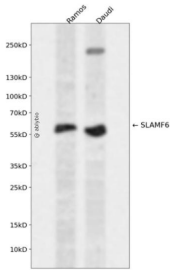
## 抗原信息

抗原信息	Recombinant fusion protein containing a sequence corresponding to amino acids 22-226 of human SLAMF6 (Q96DU3).
序列	QSSLTPLMVGILGESVTLPLEFPAGEKVNFIWLFNETSLAFIVPHETKSPEIHVTNPKQGKRLNFTQSYSLQLSNLKMEDT GSYRAQISTKTSAKLSSYTLRILRQLRNIQVTNHSQLFQNMTCELHLTCSVEDADDNVSFRWEALGNTLSSQPNLTVSWD PRISSEQDYTCIAENAVSNLSFSVSAQKLCEDVKIQYDTKM

## 靶点信息

研究背景	The protein encoded by this gene is a type I transmembrane protein, belonging to the CD2 subfamily of the immunoglobulin superfamily. This encoded protein is expressed on Natural killer (NK), T, and B lymphocytes. It undergoes tyrosine phosphorylation and associates with the Src homology 2 domain-containing protein (SH2D1A) as well as with SH2 domain-containing phosphatases (SHPs). It functions as a coreceptor in the process of NK cell activation. It can also mediate inhibitory signals in NK cells from X-linked lymphoproliferative patients. Alternative splicing results in multiple transcript variants encoding distinct isoforms.
基因ID	114836
基因名	SLAMF6
Swiss	Q96DU3
别名	SLAMF6;CD352;KALI;KAL1b;Ly108;NTB-A;NTBA;SF2000

## 产品验证



Western blot analysis of SLAMF6 expressed in Ramos, Daudi using SLAMF6 Rabbit pAb at 1:1000. Secondary antibody: HRP Goat Anti-Rabbit IgG (H+L) at 1:5000. Lysates/proteins: 30ug per lane. Blocking buffer: 5% non-fat dry milk in TBST. Detection: ECL Enhanced Kit. Exposure time: 120s.

## 实验步骤

访问官网浏览详情: [www.ablybio.cn](http://www.ablybio.cn)