

# INPP1 Rabbit pAb

货号: **AYP20111**

## 产品信息

反应	Human,Mouse
宿主	Rabbit
克隆性	Polyclonal
预测反应	
应用	WB
推荐浓度	<b>WB:</b> 1:500 - 1:2000
理论分子量	43kDa
实测分子量	44kDa
形式	Liquid
保存条件	Store at -20°C. Avoid freeze / thaw cycles. Buffer: PBS with 0.02% sodium azide,50% glycerol,pH7.3.
偶联物	Unconjugated
阳性对照	293T,HT-29,U-251MG,HeLa,LO2
细胞定位	cytosol
纯化	Affinity purification

## 抗原信息

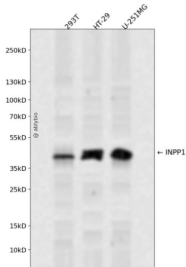
抗原信息	Recombinant fusion protein containing a sequence corresponding to amino acids 1-180 of human INPP1 (NP_002185.1).
序列	MSDILRELLCVSEKAANIARACRQQEALFQLLIEEKKEGEKKNKFAVDFKTLADVLVQEVIKQNMENKFPGLEKNIFGEESNEFTNDWGEKITLRLCSTEEETAELLSKVLNGNKVASEALARVVHQDVAFTDPTLDSTEINVPQDILGIWVDPIDSTYQYIKGSADIKSNQGIFPCGLQ

## 靶点信息

研究背景	This gene encodes the enzyme inositol polyphosphate-1-phosphatase, one of the enzymes involved in phosphatidylinositol signaling pathways. This enzyme removes the phosphate group at position 1 of the inositol ring from the polyphosphates inositol 1,4-bisphosphate and inositol 1,3,4-trisphosphate.
基因ID	3628

基因名	INPP1
Swiss	P49441
别名	INPP1

## 产品验证



Western blot analysis of INPP1 expressed in 293T, HT-29, U-251MG using INPP1 Rabbit pAb at 1:1000. Secondary antibody: HRP Goat Anti-Rabbit IgG (H+L) at 1:5000. Lysates/proteins: 30ug per lane. Blocking buffer: 5% non-fat dry milk in TBST. Detection: ECL Enhanced Kit. Exposure time: 120s.

## 实验步骤

访问官网浏览详情: [www.ablybio.cn](http://www.ablybio.cn)