

# MCFD2 Rabbit pAb

货号: AYP20109

## 产品信息

反应	Human,Mouse,Rat
宿主	Rabbit
克隆性	Polyclonal
预测反应	
应用	WB IHC
推荐浓度	<b>WB:</b> 1:500 - 1:2000 <b>IHC:</b> 1:100 - 1:200
理论分子量	10kDa/14kDa/16kDa
实测分子量	16kDa
形式	Liquid
保存条件	Store at -20°C. Avoid freeze / thaw cycles. Buffer: PBS with 0.02% sodium azide,50% glycerol,pH7.3.
偶联物	Unconjugated
阳性对照	A375,SW480,Mouse liver,Mouse kidney,Rat kidney
细胞定位	Endoplasmic reticulum,Endoplasmic reticulum-Golgi intermediate compartment,Golgi apparatus
纯化	Affinity purification

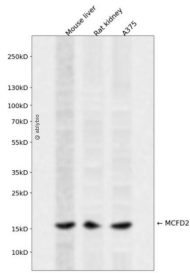
## 抗原信息

抗原信息	Recombinant fusion protein containing a sequence corresponding to amino acids 27-146 of human MCFD 2 (NP_644808.1).
序列	EEPAASFSQPGSMGLDKNTVHDQEHIMEHLEGVINKPEAEMSPQELQLHYFKMHDYDGNLLDGLLELSTAITHVHKEEGS EQAPLMSEDELINIIDGVLRDDDKNNDGYIDYAEFAKSLQ

## 靶点信息

研究背景	This gene encodes a soluble luminal protein with two calmodulin-like EF-hand motifs at its C-terminus. This protein forms a complex with LMAN1 (lectin mannose binding protein 1; also known as ERGIC-53) that facilitates the transport of coagulation factors V (FV) and VIII (FVIII) from the endoplasmic reticulum to the Golgi apparatus via an endoplasmic reticulum Golgi intermediate compartment (ERGIC). Mutations in this gene cause combined deficiency of FV and FVIII (F5F8D); a rare autosomal recessive bleeding disorder characterized by mild to moderate bleeding and coordinate reduction in plasma FV and FVIII levels. This protein has also been shown to maintain stem cell potential in adult central nervous system and is a marker for testicular germ cell tumors. The 3' UTR of this gene contains a transposon-like human repeat element named 'THE 1'. A processed RNA pseudogene of this gene is on chromosome 6p22.1. Alternative splicing results in multiple transcript variants encoding distinct isoforms.
基因ID	90411
基因名	MCFD2
Swiss	Q8NI22
别名	MCFD2;F5F8D;F5F8D2;LMAN1IP;SDNSF

## 产品验证



Western blot analysis of MCFD2 expressed in Mouse liver, Rat kidney, A375 using MCFD2 Rabbit pAb at 1:1000. Secondary antibody: HRP Goat Anti-Rabbit IgG (H+L) at 1:5000. Lysates/proteins: 30ug per lane. Blocking buffer: 5% non-fat dry milk in TBST. Detection: ECL Enhanced Kit. Exposure time: 120s.

## 实验步骤

访问官网浏览详情: [www.ablybio.cn](http://www.ablybio.cn)