

Cytokeratin 2e (KRT2) Rabbit pAb

货号: **AYP20108**

产品信息

反应	Human,Mouse,Rat
宿主	Rabbit
克隆性	Polyclonal
预测反应	
应用	WB
推荐浓度	WB: 1:500 - 1:2000
理论分子量	65kDa
实测分子量	65kDa
形式	Liquid
保存条件	Store at -20°C. Avoid freeze / thaw cycles. Buffer: PBS with 0.02% sodium azide,50% glycerol,pH7.3.
偶联物	Unconjugated
阳性对照	HeLa,Mouse liver
细胞定位	cytoplasm,cytosol,extracellular exosome,extracellular space,nucleus
纯化	Affinity purification

抗原信息

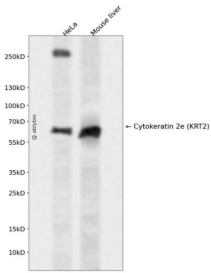
抗原信息	Recombinant fusion protein containing a sequence corresponding to amino acids 1-220 of human Cytokeratin 2e (KRT2) (NP_000414.2).
序列	MSCQISCKSRGRGGGGGGFRGFSSGSAVVSRRSTSSFSCLSRHGGGGGGFSGGGGFGSRSLVGLGGTKSISISVAGGGGGFGAAGGFGGRGGGGFSGGGSSFGGGSGFSGGGFSGGGGFGGGGFRGGGFGGPGVGLGGPGGFGPGGYPGGIHEVSVNQSLQLPLNVKVDPEIQNVKAQEREQIKTLNKFASFIDKVRFLQQNQVLQTKWELLQQMNVGT

靶点信息

研究背景	The protein encoded by this gene is a member of the keratin gene family. The type II cytokeratins consist of basic or neutral proteins which are arranged in pairs of heterotypic keratin chains coexpressed during differentiation of simple and stratified epithelial tissues. This type II cytokeratin is expressed largely in the upper spinous layer of epidermal keratinocytes and mutations in this gene have been associated with bullous congenital ichthyosiform erythroderma. The type II cytokeratins are clustered in a region of chromosome 12q12-q13.
------	--

基因ID	3849
基因名	KRT2
Swiss	P35908
别名	KRT2;CK-2e;K2e;KRT2A;KRT2E;KRTE;keratin 2

产品验证



Western blot analysis of Cytokeratin 2e (KRT2) expressed in HeLa, Mouse liver using Cytokeratin 2e (KRT2) Rabbit pAb at 1:1000. Secondary antibody: HRP Goat Anti-Rabbit IgG (H+L) at 1:5000. Lysates /proteins: 30ug per lane. Blocking buffer: 5% non-fat dry milk in TBST. Detection: ECL Enhanced Kit. Exposure time: 120s.

实验步骤

访问官网浏览详情: www.ablybio.cn