

METTL21C Rabbit pAb

货号: AYP20098

产品信息

反应	Mouse,Rat
宿主	Rabbit
克隆性	Polyclonal
预测反应	
应用	WB
推荐浓度	WB: 1:500 - 1:2000
理论分子量	29kDa
实测分子量	29kDa
形式	Liquid
保存条件	Store at -20°C. Avoid freeze / thaw cycles. Buffer: PBS with 0.02% sodium azide,50% glycerol,pH7.3.
偶联物	Unconjugated
阳性对照	Mouse skeletal muscle,Mouse pancreas,Rat skeletal muscle
细胞定位	Nucleus
纯化	Affinity purification

抗原信息

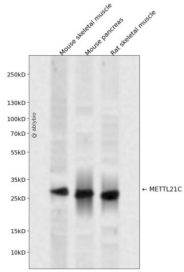
抗原信息	Recombinant fusion protein containing a sequence corresponding to amino acids 1-264 of human METTL21C (NP_001010977.1).
序列	MDVCLSSAQQPGRREGLELSSPGGWLEAEKKGAPQKDSTGGVLEESNKIEPSLHSLQKFVPTDYASYTQEHYRFAGKEIVI QESIESYGAVVWPGAMALCQYLEEHAEELNFQDAKILEIGAGPGLVSIVASILGAQVTATDLPDVLGNLQYNLLKNTLQCTA HLPEVKELVWGEDLDKNFPKSAFYDYVLASDVVYHHYFLDKLLTMMVYLSQPGTVLLWANKFRFSTDYEFLDKFKQVFD TTLAEYPSSVKLFKGLKWD

靶点信息

研究背景	Protein-lysine methyltransferase.
基因ID	196541
基因名	METTL21C

Swiss	Q5VZV1
别名	METTL21C;C13orf39

产品验证



Western blot analysis of METTL21C expressed in Mouse skeletal muscle, Mouse pancreas, Rat skeletal muscle using METTL21C Rabbit pAb at 1:1000. Secondary antibody: HRP Goat Anti-Rabbit IgG (H+L) at 1:5000. Lysates/proteins: 30ug per lane. Blocking buffer: 5% non-fat dry milk in TBST. Detection: ECL Enhanced Kit. Exposure time: 120s.

实验步骤

访问官网浏览详情: www.ablybio.cn