

YME1L1 Rabbit pAb

货号: **AYP20097**

产品信息

反应	Human,Mouse,Rat
宿主	Rabbit
克隆性	Polyclonal
预测反应	
应用	WB
推荐浓度	WB: 1:500 - 1:2000
理论分子量	75kDa/79kDa/86kDa
实测分子量	86kDa
形式	Liquid
保存条件	Store at -20°C. Avoid freeze / thaw cycles. Buffer: PBS with 0.02% sodium azide,50% glycerol,pH7.3.
偶联物	Unconjugated
阳性对照	Mouse liver,Rat liver
细胞定位	Mitochondrion inner membrane
纯化	Affinity purification

抗原信息

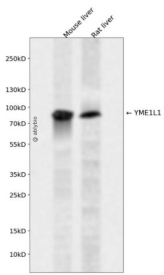
抗原信息	Recombinant fusion protein containing a sequence corresponding to amino acids 1-240 of human YME1L1 (NP_055078.1).
序列	MFSLSSTVQPQVTVPLSHLINAFTPKNTSVSLSGVSVSQNQHRDVVPEHEAPSSEPSLNLRLDLGSELKIGQIDQLVENLLPGFCKGKNISHWHTSHVSAQSFFENKYGNLDIFSTLRSSCLYRHHSRALQSIQSDLYWPVFIQSRGFKTLKSRTRRLQSTSERLAETQNIAPSFVKGFLLRDRGSDVESLDKLMKTKNIPEAHQDAFKTGFAEGFLKAQALTQKTNDSLRRTLIL

靶点信息

研究背景	The protein encoded by this gene is the human ortholog of yeast mitochondrial AAA metalloprotease, Yme1p. It is localized in the mitochondria and can functionally complement a yme1 disruptant yeast strain. It is proposed that this gene plays a role in mitochondrial protein metabolism and could be involved in mitochondrial pathologies. Three transcript variants encoding different isoforms have been found for this gene.
------	---

基因ID	10730
基因名	YME1L1
Swiss	Q96TA2
别名	YME1L1;FTSH;MEG4;OPA11;PAMP;YME1L

产品验证



Western blot analysis of YME1L1 expressed in Mouse liver,Rat liver using YME1L1 Rabbit pAb at 1:1000. Secondary antibody: HRP Goat Anti-Rabbit IgG (H+L) at 1:5000. Lysates/proteins: 30ug per lane. Blocking buffer: 5% non-fat dry milk in TBST. Detection: ECL Enhanced Kit. Exposure time: 120s.

实验步骤

访问官网浏览详情: www.ablybio.cn