

CORIN Rabbit pAb

货号: **AYP20095**

产品信息

反应	Human,Mouse,Rat
宿主	Rabbit
克隆性	Polyclonal
预测反应	
应用	WB
推荐浓度	WB: 1:500 - 1:1000
理论分子量	113kDa/116kDa
实测分子量	116KDa
形式	Liquid
保存条件	Store at -20°C. Avoid freeze / thaw cycles. Buffer: PBS with 0.02% sodium azide,50% glycerol,pH7.3.
偶联物	Unconjugated
阳性对照	HeLa,HepG2,A-549,U-251MG,Mouse liver,Rat brain
细胞定位	Cell membrane,Secreted,Single-pass type II membrane protein,Single-pass type II membrane protein
纯化	Affinity purification

抗原信息

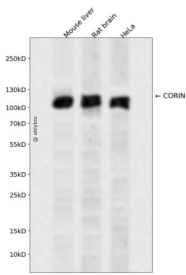
抗原信息	Recombinant fusion protein containing a sequence corresponding to amino acids 1-110 of human CORIN (NP_006578.2).
序列	MKQSPALAPEERCRRAGSPKPVLRADDNNMGNGCSQKLATANLLRFLLLVLPICALVLLLIVLLSYVGTLQKVYFKSNGSE PLVTDGEIQGSDVILTNTIYNQSTVVS

靶点信息

研究背景	This gene encodes a member of the type II transmembrane serine protease class of the trypsin superfamily. Members of this family are composed of multiple structurally distinct domains. The encoded protein converts pro-atrial natriuretic peptide to biologically active atrial natriuretic peptide, a cardiac hormone that regulates blood volume and pressure. This protein may also function as a pro-brain-type natriuretic peptide convertase. Multiple alternatively spliced transcript variants encoding different isoforms have been found for this gene.
------	--

基因ID	10699
基因名	CORIN
Swiss	Q9Y5Q5
别名	CORIN;ATC2;CRN;Lrp4;PEE5;TMPRSS10;corin

产品验证



Western blot analysis of CORIN expressed in Mouse liver,Rat brain,HeLa using CORIN Rabbit pAb at 1:1 000. Secondary antibody: HRP Goat Anti-Rabbit IgG (H+L) at 1:5000. Lysates/proteins: 30ug per lane. Blocking buffer: 5% non-fat dry milk in TBST. Detection: ECL Enhanced Kit. Exposure time: 120s.

实验步骤

访问官网浏览详情: www.ablybio.cn