

NPR1 Rabbit pAb

货号: **AYP20091**

产品信息

反应	Human,Mouse,Rat
宿主	Rabbit
克隆性	Polyclonal
预测反应	
应用	WB
推荐浓度	WB: 1:500 - 1:2000
理论分子量	118kDa
实测分子量	160kDa
形式	Liquid
保存条件	Store at -20°C. Avoid freeze / thaw cycles. Buffer: PBS with 0.02% sodium azide,50% glycerol,pH7.3.
偶联物	Unconjugated
阳性对照	293T,HL-60,NCI-H460,HepG2,Mouse lung,Mouse liver,Rat brain
细胞定位	Membrane,Single-pass type I membrane protein
纯化	Affinity purification

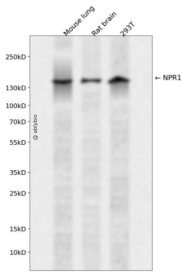
抗原信息

抗原信息	Recombinant fusion protein containing a sequence corresponding to amino acids 260-470 of human NPR1 (NP_000897.3).
序列	EAGLCGEDYVFFHLDIFGQSLQGGQGPAAPRRPW ERGDGQDVSARQAFQAAKIITYKDPDNPEYLEFLKQLKHLAYEQFNF TMEDGLVNTIPASFHDGLLLYIQAVTETLAHGGTVTDGENITQRMWNRSFQGVGTGYLKIDSSGDRETD FSLWMDPENG AFRVVLNNGTSQELVAVSGRKLNWPLGYPPPDI PKCGFDNEDPACNQDHLS

靶点信息

研究背景	Guanylyl cyclases, catalyzing the production of cGMP from GTP, are classified as soluble and membrane forms (Garbers and Lowe, 1994 [PubMed 7982997]). The membrane guanylyl cyclases, often termed guanylyl cyclases A through F, form a family of cell-surface receptors with a similar topographic structure: an extracellular ligand-binding domain, a single membrane-spanning domain, and an intracellular region that contains a protein kinase-like domain and a cyclase catalytic domain. GC-A and GC-B function as receptors for natriuretic peptides; they are also referred to as atrial natriuretic peptide receptor A (NPR1) and type B (NPR2; MIM 108961). Also see NPR3 (MIM 108962), which encodes a protein with only the ligand-binding transmembrane and 37-amino acid cytoplasmic domains. NPR1 is a membrane-bound guanylate cyclase that serves as the receptor for both atrial and brain natriuretic peptides (ANP (MIM 108780) and BNP (MIM 600295), respectively).[supplied by OMIM, May 2009]
基因ID	4881
基因名	NPR1
Swiss	P16066
别名	NPR1;ANPRA;ANPa;GUC2A;GUCY2A;NPRA

产品验证



Western blot analysis of NPR1 expressed in Mouse lung,Rat brain,293T using NPR1 Rabbit pAb at 1:1000. Secondary antibody: HRP Goat Anti-Rabbit IgG (H+L) at 1:5000. Lysates/proteins: 30ug per lane. Blocking buffer: 5% non-fat dry milk in TBST. Detection: ECL Enhanced Kit. Exposure time: 120s.

实验步骤

访问官网浏览详情: www.ablybio.cn