

COPB1 Rabbit pAb

货号: **AYP20083**

产品信息

反应	Human,Mouse,Rat
宿主	Rabbit
克隆性	Polyclonal
预测反应	
应用	WB
推荐浓度	WB: 1:1000 - 1:2000
理论分子量	107kDa
实测分子量	110kDa
形式	Liquid
保存条件	Store at -20°C. Avoid freeze / thaw cycles. Buffer: PBS with 0.02% sodium azide,50% glycerol,pH7.3.
偶联物	Unconjugated
阳性对照	Raji,LO2,A-549,NIH/3T3,Mouse heart,Mouse kidney,Mouse liver,Rat liver
细胞定位	COPI-coated vesicle membrane,Cell membrane,Cytoplasm,Cytoplasmic side,Cytoplasmic vesicle,Endoplasmic reticulum-Golgi intermediate compartment,Golgi apparatus membrane,Peripheral membrane protein
纯化	Affinity purification

抗原信息

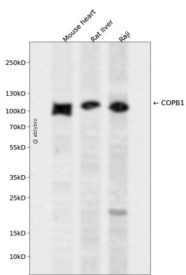
抗原信息	Recombinant fusion protein containing a sequence corresponding to amino acids 460-740 of human COPB1 (NP_057535.1).
序列	WILGEYCTKEDIQSVMTAIRSLGEIPIVESEIKKEAGELKPEEEITVGPVQKLVTEMGTYATQSALSSSRPTKKEEDRPPLRGFLLDGDFFVAASLATTTLKIALRYVALVQEKKKQNSFVAEAMLLMATILHLGKSSLPKKPITDDDDVDRLSCLKVLSECSPLMNDIFNKECRQSLSHMLSAKLEEEKLSQKKESEKRNVTVPDDPISFMQLTAKNEMNCKEDQFQLSLLAAMGNTQRKEAADPLASKLNKVTQLTGFSDPVYAEAYVHVNQYDIV

靶点信息

研究背景	This gene encodes a protein subunit of the coatomer complex associated with non-clathrin coated vesicles. The coatomer complex, also known as the coat protein complex 1, forms in the cytoplasm and is recruited to the Golgi by activated guanosine triphosphatases. Once at the Golgi membrane, the coatomer complex may assist in the movement of protein and lipid components back to the endoplasmic reticulum. Alternatively spliced transcript variants have been described.
------	--

基因ID	1315
基因名	COPB1
Swiss	P53618
别名	COPB1;COPB

产品验证



Western blot analysis of COPB1 expressed in Mouse heart,Rat liver,Raji using COPB1 Rabbit pAb at 1:10 00. Secondary antibody: HRP Goat Anti-Rabbit IgG (H+L) at 1:5000. Lysates/proteins: 30ug per lane. Bl ocking buffer: 5% non-fat dry milk in TBST. Detection: ECL Enhanced Kit. Exposure time: 120s.

实验步骤

访问官网浏览详情: www.ablybio.cn