

CPB1 Rabbit pAb

货号: **AYP20081**

产品信息

反应	Human,Mouse,Rat
宿主	Rabbit
克隆性	Polyclonal
预测反应	
应用	WB
推荐浓度	WB: 1:1000 - 1:2000
理论分子量	47kDa
实测分子量	47kDa
形式	Liquid
保存条件	Store at -20°C. Avoid freeze / thaw cycles. Buffer: PBS with 0.02% sodium azide,50% glycerol,pH7.3.
偶联物	Unconjugated
阳性对照	SW620,Mouse pancreas,Mouse liver,Mouse spleen,Rat pancreas
细胞定位	Secreted
纯化	Affinity purification

抗原信息

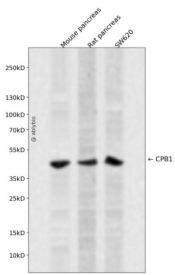
抗原信息	Recombinant fusion protein containing a sequence corresponding to amino acids 111-417 of human CPB1 (NP_001862.2).
序列	ATGHSYEKYNKWETIEAWTQQVATENPALISRSVIGTTFEGRAIYLLKVGKAGQNKPAIFMDCGFHAREWISPAFCQWFVR EAVRTYGREIQVTELLDKLDFYVLPVLNIDGYIYTWTKSRFWRKTRSTHTGSSCIGTDPNRNFDAGWCEIGASRNPCEDEY CGPAAESEKETKALADFIRNKLSSIKAYLTIHSYSQMMIYPYSYAYKLGENNAELNALAKATVKELASLHGTYGPGATTIY PAAGGSDDWAYDQGIRYSFTFELRDTGRYGFLLPESQIRATCEETFLAIKYVASYVLEHLY

靶点信息

研究背景	Three different procarboxypeptidases A and two different procarboxypeptidases B have been isolated. The B1 and B2 forms differ from each other mainly in isoelectric point. Carboxypeptidase B1 is a highly tissue-specific protein and is a useful serum marker for acute pancreatitis and dysfunction of pancreatic transplants. It is not elevated in pancreatic carcinoma.
------	--

基因ID	1360
基因名	CPB1
Swiss	P15086
别名	CPB1;CPB;PASP;PCPB

产品验证



Western blot analysis of CPB1 expressed in Mouse pancreas,Rat pancreas,SW620 using CPB1 Rabbit pAb at 1:1000. Secondary antibody: HRP Goat Anti-Rabbit IgG (H+L) at 1:5000. Lysates/proteins: 30ug per lane. Blocking buffer: 5% non-fat dry milk in TBST. Detection: ECL Enhanced Kit. Exposure time: 120s.

实验步骤

访问官网浏览详情: www.ablybio.cn