

# BCKDHB Rabbit pAb

货号: **AYP20070**

## 产品信息

反应	Mouse
宿主	Rabbit
克隆性	Polyclonal
预测反应	
应用	WB
推荐浓度	<b>WB:</b> 1:1000 - 1:5000
理论分子量	23kDa/43kDa
实测分子量	43KDa
形式	Liquid
保存条件	Store at -20°C. Avoid freeze / thaw cycles. Buffer: PBS with 0.02% sodium azide,50% glycerol,pH7.3.
偶联物	Unconjugated
阳性对照	Mouse liver,Rat liver
细胞定位	Mitochondrion matrix
纯化	Affinity purification

## 抗原信息

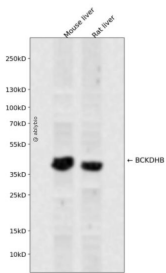
抗原信息	Recombinant fusion protein containing a sequence corresponding to amino acids 183-392 of human BCKDHB (NP_898871.1).
序列	RSPWGCVGHGALYHSQSPEAFFAHCPGKVVIPRSPFQAKGLLLSCIEDKNPCIFFEPKILYRAAAEEVPIEPYNIPLSQAEEVIQEGSDVTLVAWGTQVHVIREVASMKEKLGVSCEVIDLRTIIPWDVDTICKSVIKTGRLLISHEAPLTGGFAEISSTVQEECFLNLEAPISRVCGYDTPFPHFIFEPFYIPDKWKCYDALRKMINY

## 靶点信息

研究背景	This gene encodes the E1 beta subunit of branched-chain keto acid dehydrogenase, which is a multienzyme complex associated with the inner membrane of mitochondria. This enzyme complex functions in the catabolism of branched-chain amino acids. Mutations in this gene have been associated with maple syrup urine disease (MSUD), type 1B, a disease characterized by a maple syrup odor to the urine in addition to mental and physical retardation and feeding problems. Alternative splicing at this locus results in multiple transcript variants.
------	--

基因ID	594
基因名	BCKDHB
Swiss	P21953
别名	BCKDHB;BCKDE1B;BCKDH E1-beta;E1B;BCKDHE1-beta

## 产品验证



Western blot analysis of BCKDHB expressed in Mouse liver,Rat liver using BCKDHB Rabbit pAb at 1:1000. Secondary antibody: HRP Goat Anti-Rabbit IgG (H+L) at 1:5000. Lysates/proteins: 30ug per lane. Blocking buffer: 5% non-fat dry milk in TBST. Detection: ECL Enhanced Kit. Exposure time: 120s.

## 实验步骤

访问官网浏览详情: [www.ablybio.cn](http://www.ablybio.cn)