

GDF2 Rabbit pAb

货号: **AYP20069**

产品信息

反应	Human,Mouse,Rat
宿主	Rabbit
克隆性	Polyclonal
预测反应	
应用	WB
推荐浓度	WB: 1:500 - 1:2000
理论分子量	47kDa
实测分子量	47kDa
形式	Liquid
保存条件	Store at -20°C. Avoid freeze / thaw cycles. Buffer: PBS with 0.01% thiomersal,50% glycerol,pH7.3.
偶联物	Unconjugated
阳性对照	Mouse pancreas,Mouse skeletal muscle,Rat skeletal muscle
细胞定位	Secreted
纯化	Affinity purification

抗原信息

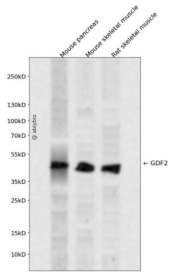
抗原信息	Recombinant fusion protein containing a sequence corresponding to amino acids 320-429 of human GDF 2 (NP_057288.1).
序列	SAGAGSHCQKTSLRVNFEDIGWDSWIIAPKEYEAYECKGGCFFPLADDVTPTKHAIVQTLVHLKFPTKVGKACCVPTKLSPI SVLYKDDMGVPTLKYHYEGMSVAECGCR

靶点信息

研究背景	The protein encoded by this gene is a member of the bone morphogenetic protein (BMP) family and the TGF-beta superfamily. This group of proteins is characterized by a polybasic proteolytic processing site which is cleaved to produce a mature protein containing seven conserved cysteine residues. The members of this family are regulators of cell growth and differentiation in both embryonic and adult tissues. Studies in rodents suggest that this protein plays a role in the adult liver and in differentiation of cholinergic central nervous system neurons. Mutations in this gene are associated with hereditary hemorrhagic telangiectasia.
------	--

基因ID	2658
基因名	GDF2
Swiss	Q9UK05
别名	GDF2;BMP-9;BMP9;HHT5

产品验证



Western blot analysis of GDF2 expressed in Mouse pancreas, Mouse skeletal muscle, Rat skeletal muscle using GDF2 Rabbit pAb at 1:1000. Secondary antibody: HRP Goat Anti-Rabbit IgG (H+L) at 1:5000. Lysates /proteins: 30ug per lane. Blocking buffer: 5% non-fat dry milk in TBST. Detection: ECL Enhanced Kit. Exposure time: 120s.

实验步骤

访问官网浏览详情: www.ablybio.cn