

COPG1 Rabbit pAb

货号: **AYP20063**

产品信息

反应	Human,Mouse,Rat
宿主	Rabbit
克隆性	Polyclonal
预测反应	
应用	WB IHC
推荐浓度	WB: 1:1000 - 1:2000 IHC: 1:50 - 1:200
理论分子量	97kDa
实测分子量	105kDa
形式	Liquid
保存条件	Store at -20°C. Avoid freeze / thaw cycles. Buffer: PBS with 0.01% thiomersal,50% glycerol,pH7.3.
偶联物	Unconjugated
阳性对照	HepG2,A375,BT-474,Mouse liver,Mouse kidney,Rat kidney
细胞定位	COPI-coated vesicle membrane,Cytoplasm,Cytoplasmic side,Cytoplasmic vesicle,Golgi apparatus membrane,Peripheral membrane protein
纯化	Affinity purification

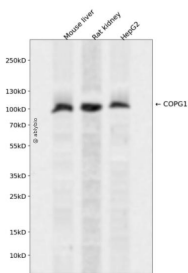
抗原信息

抗原信息	Recombinant fusion protein containing a sequence corresponding to amino acids 555-874 of human COPG1 (NP_057212.1).
序列	IPGLERALQQYTLEPSEKPFDLKSVPLATAPMAEQRTESTPITAVKQPEKVAATRQEIQEQLAAVPEFRGLGPLFKSSPEPV ALTESETEYVIRCTKHTFTNHMVFQFDCTNTLNDQTLNENVTVMQMEPTAYEVLCYVPARSLPYNQPGTCYTLVALPKEDPTA VACTFSCMMKFTVKDCDPTTGETDDEGYEDEYVLEDLEVTVADHIQKVMKLNFEAAWDEVGDEFEKEETFTLSTIKTLEEA VGNIVKFLGMHPCERSDKVPDNKNTHLLLLAGVFRGGHDILVRSRLLLLDVTVMQVTARSLEELPVDIILASVG

靶点信息

研究背景	The coatomer is a cytosolic protein complex that binds to dilysine motifs and reversibly associates with Golgi non-clathrin-coated vesicles, which further mediate biosynthetic protein transport from the ER, via the Golgi up to the trans Golgi network. Coatomer complex is required for budding from Golgi membranes, and is essential for the retrograde Golgi-to-ER transport of dilysine-tagged proteins. In mammals, the coatomer can only be recruited by membranes associated to ADP-ribosylation factors (ARFs, which are small GTP-binding proteins); the complex also influences the Golgi structural integrity, as well as the processing, activity, and endocytic recycling of LDL receptors. Required for limiting lipid storage in lipid droplets. Involved in lipid homeostasis by regulating the presence of perilipin family members PLIN2 and PLIN3 at the lipid droplet surface and promoting the association of adipocyte triglyceride lipase (PNPLA2) with the lipid droplet surface to mediate lipolysis (By similarity).
基因ID	22820
基因名	COPG1
Swiss	Q9Y678
别名	COPG1;COPG

产品验证



Western blot analysis of COPG1 expressed in Mouse liver, Rat kidney, HepG2 using COPG1 Rabbit pAb at 1:1000. Secondary antibody: HRP Goat Anti-Rabbit IgG (H+L) at 1:5000. Lysates/proteins: 30ug per lane. Blocking buffer: 5% non-fat dry milk in TBST. Detection: ECL Enhanced Kit. Exposure time: 120s.

实验步骤

访问官网浏览详情: www.ablybio.cn