

BHLHE41 Rabbit pAb

货号: **AYP20061**

产品信息

| | |
|-------|--|
| 反应 | Human,Mouse,Rat |
| 宿主 | Rabbit |
| 克隆性 | Polyclonal |
| 预测反应 | |
| 应用 | WB |
| 推荐浓度 | WB: 1:1000 - 1:2000 |
| 理论分子量 | 50kDa |
| 实测分子量 | 75KDa |
| 形式 | Liquid |
| 保存条件 | Store at -20°C. Avoid freeze / thaw cycles. Buffer: PBS with 0.01% thiomersal,50% glycerol,pH7.3. |
| 偶联物 | Unconjugated |
| 阳性对照 | K-562(Negative control),Rat skeletal muscle |
| 细胞定位 | Nucleus |
| 纯化 | Affinity purification |

抗原信息

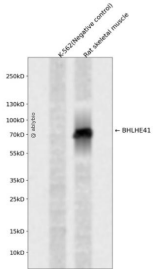
| | |
|------|---|
| 抗原信息 | Recombinant fusion protein containing a sequence corresponding to amino acids 120-280 of human BHLHE41 (NP_110389.1). |
| 序列 | LKSPIQSDLDFAHSGFQTCACEVLQYLSRFESWTPREPRCVQLINHLHAVATQFLPTPQLLTQQVPLSKGTGAPSAAGSAA APCLERAGQKLEPLAYCVPVIQRTQPSAELAAENDTDTDSGYGGAEARPDREKKGAGASRVTIKQEPPGEDSPAPKRM |

靶点信息

| | |
|------|--|
| 研究背景 | This gene encodes a basic helix-loop-helix protein expressed in various tissues. The encoded protein can interact with ARNTL or compete for E-box binding sites in the promoter of PER1 and repress CLOCK/ARNTL's transactivation of PER1. This gene is believed to be involved in the control of circadian rhythm and cell differentiation. Defects in this gene are associated with the short sleep phenotype. |
| 基因ID | 79365 |

| | |
|-------|----------------------------------|
| 基因名 | BHLHE41 |
| Swiss | Q9C0J9 |
| 别名 | BHLHE41;BHLHB3;DEC2;SHARP1;hDEC2 |

产品验证



Western blot analysis of BHLHE41 expressed in K-562(Negative control),Rat skeletal muscle using BHLHE41 Rabbit pAb at 1:1000. Secondary antibody: HRP Goat Anti-Rabbit IgG (H+L) at 1:5000. Lysates/proteins: 30ug per lane. Blocking buffer: 5% non-fat dry milk in TBST. Detection: ECL Enhanced Kit. Exposure time: 120s.

实验步骤

访问官网浏览详情: www.ablybio.cn