

KLF1 Rabbit pAb

货号: **AYP20055**

产品信息

反应	Human,Rat
宿主	Rabbit
克隆性	Polyclonal
预测反应	
应用	WB
推荐浓度	WB: 1:500 - 1:1000
理论分子量	38kDa
实测分子量	38KDa
形式	Liquid
保存条件	Store at -20°C. Avoid freeze / thaw cycles. Buffer: PBS with 0.05% proclin300,50% glycerol,pH7.3.
偶联物	Unconjugated
阳性对照	Rat plasma
细胞定位	Nucleus
纯化	Affinity purification

抗原信息

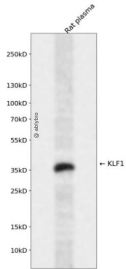
抗原信息	A synthetic peptide corresponding to a sequence within amino acids 1-100 of human KLF1 (NP_006554.1)
序列	MATAETALPSISTLTALGPFDPDQDDFLKWWRSEEAQDMGPGPPDPTTEPLHVKSEDQPGEEDDERGADATWDLDLLL TNFSGPEPGGAPQTCALAPSE

靶点信息

研究背景	This gene encodes a hematopoietic-specific transcription factor that induces high-level expression of adult beta-globin and other erythroid genes. The zinc-finger protein binds to the DNA sequence CCACACCCT found in the beta hemoglobin promoter. Heterozygous loss-of-function mutations in this gene result in the dominant In(Lu) blood phenotype.
基因ID	10661

基因名	KLF1
Swiss	Q13351
别名	KLF1;EKLF;CDAN4;HBFQTL6;INLU

产品验证



Western blot analysis of KLF1 expressed in Rat plasma using KLF1 Rabbit pAb at 1:1000. Secondary antibody: HRP Goat Anti-Rabbit IgG (H+L) at 1:5000. Lysates/proteins: 30ug per lane. Blocking buffer: 5% non-fat dry milk in TBST. Detection: ECL Enhanced Kit. Exposure time: 120s.

实验步骤

访问官网浏览详情: www.ablybio.cn