

# WDR11 Rabbit pAb

货号: AYP20052

## 产品信息

反应	Human
宿主	Rabbit
克隆性	Polyclonal
预测反应	
应用	WB
推荐浓度	<b>WB:</b> 1:1000 - 1:2000
理论分子量	136kDa
实测分子量	130kDa
形式	Liquid
保存条件	Store at -20°C. Avoid freeze / thaw cycles. Buffer: PBS with 0.02% sodium azide, 50% glycerol, pH7.3.
偶联物	Unconjugated
阳性对照	DU145, HL-60, HepG2
细胞定位	Cytoplasm, Membrane, Nucleus, Single-pass membrane protein
纯化	Affinity purification

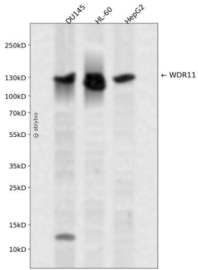
## 抗原信息

抗原信息	Recombinant fusion protein containing a sequence corresponding to amino acids 975-1224 of human WDR11 (NP_060587.8).
序列	YFQKFLQERVNLQEVKRSTYDHRKCTDQLLLLGQTDRAVQLLLETSDADNQHYCDLKAQLVTTVTSSGSPSQSTIKLVAT NMIANGKLAEGVQLLCLIDKAADACRYLQTYGEWNRAAWLAKVRLNPEECADVLRRWVDHLCSPQVNQKSKALLVLLSL GCFFSVAETLHSMRYFDRAALFVEACLKYGAFEVTEDETEKLITAIYADYARSLKNLGFQGAVLFASKAGAAGKDLLNELES PKEEPIEE

## 靶点信息

研究背景	This gene encodes a member of the WD repeat protein family. WD repeats are minimally conserved regions of approximately 40 amino acids typically bracketed by gly-his and trp-asp (GH-WD), which may facilitate formation of heterotrimeric or multiprotein complexes. Members of this family are involved in a variety of cellular processes, including cell cycle progression, signal transduction, apoptosis, and gene regulation. This gene is located in the chromosome 10q25-26 region, which is frequently deleted in gliomas and tumors of other tissues, and is disrupted by the t(10;19) translocation rearrangement in glioblastoma cells. The gene location suggests that it is a candidate gene for the tumor suppressor locus.
基因ID	55717
基因名	WDR11
Swiss	Q9BZH6
别名	WDR11;BRWD2;DR11;HH14;SRI1;WDR15

## 产品验证



Western blot analysis of WDR11 expressed in DU145,HL-60,HepG2 using WDR11 Rabbit pAb at 1:1000. Secondary antibody: HRP Goat Anti-Rabbit IgG (H+L) at 1:5000. Lysates/proteins: 30ug per lane. Blocking buffer: 5% non-fat dry milk in TBST. Detection: ECL Enhanced Kit. Exposure time: 120s.

## 实验步骤

访问官网浏览详情: [www.ablybio.cn](http://www.ablybio.cn)