

SRPRB Rabbit pAb

货号: **AYP20051**

产品信息

反应	Human,Mouse,Rat
宿主	Rabbit
克隆性	Polyclonal
预测反应	
应用	WB IF/ICC
推荐浓度	WB: 1:1000 - 1:2000 IF/ICC: 1:50 - 1:200
理论分子量	29kDa
实测分子量	30kDa
形式	Liquid
保存条件	Store at -20°C. Avoid freeze / thaw cycles. Buffer: PBS with 0.01% thiomersal,50% glycerol,pH7.3.
偶联物	Unconjugated
阳性对照	MCF7,HT-29,LO2,,B cells,Mouse liver,Mouse pancreas,Mouse small intestine,Rat liver
细胞定位	Endoplasmic reticulum membrane,Single-pass membrane protein
纯化	Affinity purification

抗原信息

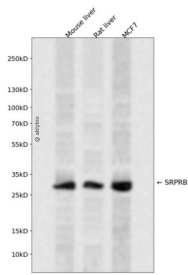
抗原信息	Recombinant fusion protein containing a sequence corresponding to amino acids 57-271 of human SRPRB (NP_067026.3).
序列	IRSRRSSQRAVLLVGLCDSGKTLFVRLTGLYRDTQTSITDSCAVYRVNNNRGNSLTLDLPGHESLRLQLERFKSSARAI VFVVDSSAAFQREVKDVAEFLYQVLIDSMGLKNTPSFLIACNKQDIAMAKSAKLIQQLEKELNTRVTRSAAPSTLDSSTA PAQLGKKGKEFEFSQLPLKVEFLECSAKGGRGDVGSADIQDLEKWLAKIA

靶点信息

研究背景	The protein encoded by this gene has similarity to mouse protein which is a subunit of the signal recognition particle receptor (SR). This subunit is a transmembrane GTPase belonging to the GTPase superfamily. It anchors alpha subunit, a peripheral membrane GTPase, to the ER membrane. SR is required for the cotranslational targeting of both secretory and membrane proteins to the ER membrane.
------	--

基因ID	58477
基因名	SRPRB
Swiss	Q9Y5M8
别名	SRPRB;APMCF1

产品验证



Western blot analysis of SRPRB expressed in Mouse liver,Rat liver,MCF7 using SRPRB Rabbit pAb at 1:1 000. Secondary antibody: HRP Goat Anti-Rabbit IgG (H+L) at 1:5000. Lysates/proteins: 30ug per lane. Blocking buffer: 5% non-fat dry milk in TBST. Detection: ECL Enhanced Kit. Exposure time: 120s.

实验步骤

访问官网浏览详情: www.ablybio.cn