

WDR26 Rabbit pAb

货号: **AYP20047**

产品信息

反应	Human,Mouse
宿主	Rabbit
克隆性	Polyclonal
预测反应	
应用	WB
推荐浓度	WB: 1:1000 - 1:2000
理论分子量	21kDa/22kDa/70kDa/72kDa
实测分子量	72kDa
形式	Liquid
保存条件	Store at -20°C. Avoid freeze / thaw cycles. Buffer: PBS with 0.01% thiomersal,50% glycerol,pH7.3.
偶联物	Unconjugated
阳性对照	A-549,LO2,HeLa,SKOV3,Mouse lung,Mouse spleen,Mouse testis
细胞定位	Cytoplasm
纯化	Affinity purification

抗原信息

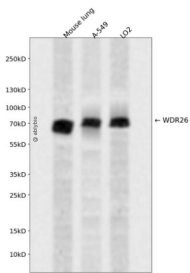
抗原信息	Recombinant fusion protein containing a sequence corresponding to amino acids 362-661 of human WDR 26 (NP_079436.4).
序列	KFSNDGTKLATGSKDTTVIWQVDPDTHLLKLLKTLEGHAYGVSYIAWSPDDNYLVACGPDDCSELWLWNVQTGELRTKMSQSHEDSLTSVAWNPDGKRFVTGGQQRGQFYQCDLDGNLLDSWEGVRVQCLWCLSDGKTVLASDTHQRIRGYNFEDLTDRNIVQEDHPIMSFTISKNGRLALLNVATQGVHLWDLQDRVLRKYQGVTQGFYTIHSCFGGHNEDFIASGSEDHKVYIWHKRSELPiAELTGHTRTVNCVSWNPQIPSMASASDDGTVRIWGPAPFIDHQNIEECSSMDS

靶点信息

研究背景	This gene encodes a member of the WD repeat protein family. WD repeats are minimally conserved regions of approximately 40 amino acids typically bracketed by gly-his and trp-aspartate (GH-WD), which may facilitate formation of heterotrimeric or multiprotein complexes. Members of this family are involved in a variety of cellular processes, including cell cycle progression, signal transduction, apoptosis, and gene regulation. Two transcript variants encoding two different isoforms have been found for this gene.
------	------------------------------------------------------------------------------------------------------------------------------------------------------------------------------------------------------------------------------------------------------------------------------------------------------------------------------------------------------------------------------------------------------------------------------------------------------------------------------------------------------------------------------------

基因ID	80232
基因名	WDR26
Swiss	Q9H7D7
别名	WDR26;CDW2;GID7;MIP2

产品验证



Western blot analysis of WDR26 expressed in Mouse lung,A-549,LO2 using WDR26 Rabbit pAb at 1:1000. Secondary antibody: HRP Goat Anti-Rabbit IgG (H+L) at 1:5000. Lysates/proteins: 30ug per lane. Blocking buffer: 5% non-fat dry milk in TBST. Detection: ECL Enhanced Kit. Exposure time: 120s.

实验步骤

访问官网浏览详情: www.ablybio.cn