

PSMD4 Rabbit pAb

货号: **AYP20046**

产品信息

| | |
|-------|--|
| 反应 | Human,Mouse,Rat,Monkey |
| 宿主 | Rabbit |
| 克隆性 | Polyclonal |
| 预测反应 | |
| 应用 | WB IF/ICC IP |
| 推荐浓度 | WB: 1:500 - 1:2000 IF/ICC: 1:50 - 1:200 IP: 1:500 - 1:1000 |
| 理论分子量 | 28kDa/40kDa |
| 实测分子量 | 50kDa |
| 形式 | Liquid |
| 保存条件 | Store at -20°C. Avoid freeze / thaw cycles. Buffer: PBS with 0.02% sodium azide,50% glycerol,pH7.3. |
| 偶联物 | Unconjugated |
| 阳性对照 | HUVEC,MCF7 |
| 细胞定位 | cytosol,nucleoplasm,nucleus |
| 纯化 | Affinity purification |

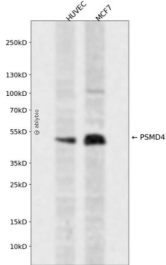
抗原信息

| | |
|------|--|
| 抗原信息 | Recombinant fusion protein containing a sequence corresponding to amino acids 1-377 of human PSMD4 (NP_002801.1). |
| 序列 | MVLESTMVCVDNSEYMRNGDFLPTRLQAQQDAVNIVCHSKTRSNPENNVGLITLANDCEVLTTLTPDTGRILSKLHTVQPK GKITFCTGIRVAHLALKHRQGNHMKMRHIAFVGSVPEDNEKDVLKAKRLKKEKVNVDIIFGEEEVNTEKLTAFVNTLNGKD GTGSHLVTVPGPSLADALISSPILAGEGGAMLGLGASDFEFGVDPSADPELALALRVSMEEQRQRQEEEEARRAAAASAA EAGIATTGTEDSDDALLKMTISQQEFGRGTGLPDLSSMTEEEQIAYAMQMSLQGAIEFGQAESADIDASSAMDTSEPAKEED DYDVMQDPEFLQSVLENLPGVDPNNEAIRNAMGSLASQATKDGKKDKKEDKK |

靶点信息

| | |
|-------|--|
| 研究背景 | The 26S proteasome is a multicatalytic proteinase complex with a highly ordered structure composed of 2 complexes, a 20S core and a 19S regulator. The 20S core is composed of 4 rings of 28 non-identical subunits; 2 rings are composed of 7 alpha subunits and 2 rings are composed of 7 beta subunits. The 19S regulator is composed of a base, which contains 6 ATPase subunits and 2 non-ATPase subunits, and a lid, which contains up to 10 non-ATPase subunits. Proteasomes are distributed throughout eukaryotic cells at a high concentration and cleave peptides in an ATP/ubiquitin-dependent process in a non-lysosomal pathway. An essential function of a modified proteasome, the immunoproteasome, is the processing of class I MHC peptides. This gene encodes one of the non-ATPase subunits of the 19S regulator lid. Pseudogenes have been identified on chromosomes 10 and 21. |
| 基因ID | 5710 |
| 基因名 | PSMD4 |
| Swiss | P55036 |
| 别名 | PSMD4;AF;AF-1;ASF;MCB1;Rpn10;S5A;pUB-R5 |

产品验证



Western blot analysis of PSMD4 expressed in HUVEC, MCF7 using PSMD4 Rabbit pAb at 1:1000. Secondary antibody: HRP Goat Anti-Rabbit IgG (H+L) at 1:5000. Lysates/proteins: 30ug per lane. Blocking buffer: 5% non-fat dry milk in TBST. Detection: ECL Enhanced Kit. Exposure time: 120s.

实验步骤

访问官网浏览详情: www.ablybio.cn