

TMPRSS6 Rabbit pAb

货号: **AYP20042**

产品信息

反应	Human,Mouse,Rat
宿主	Rabbit
克隆性	Polyclonal
预测反应	
应用	WB IF/ICC
推荐浓度	WB: 1:500 - 1:1000 IF/ICC: 1:50 - 1:200
理论分子量	51kDa/88kDa/90kDa/91kDa
实测分子量	110KDa
形式	Liquid
保存条件	Store at -20°C. Avoid freeze / thaw cycles. Buffer: PBS with 0.01% thiomersal,50% glycerol,pH7.3.
偶联物	Unconjugated
阳性对照	LO2,Mouse liver,Rat liver
细胞定位	Cell membrane,Single-pass type II membrane protein
纯化	Affinity purification

抗原信息

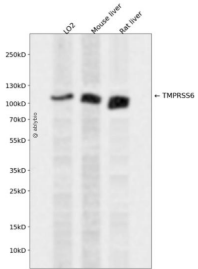
抗原信息	Recombinant fusion protein containing a sequence corresponding to amino acids 77-220 of human TMPRSS6 (NP_705837.1).
序列	GYKAEVMVSQVYSGSLRVLNRHFSQDLTRRESSAFRSETAKAQKMLKELITSTRLGTYYNSSSVYSFGEGPLTCFFWFILQIPEHRRMLMSPEVVQALLVEELLSTVNSSAAVPYRAEYVDPEGLVILEASVKDIAALNSTLG

靶点信息

研究背景	The protein encoded by this gene is a type II transmembrane serine proteinase that is found attached to the cell surface. The encoded protein may be involved in matrix remodeling processes in the liver. Alternative splicing results in multiple transcript variants.
基因ID	164656

基因名	TMPRSS6
Swiss	Q8IU80
别名	TMPRSS6;IRIDA

产品验证



Western blot analysis of TMPRSS6 expressed in LO2, Mouse liver, Rat liver using TMPRSS6 Rabbit pAb at 1:1000. Secondary antibody: HRP Goat Anti-Rabbit IgG (H+L) at 1:5000. Lysates/proteins: 30ug per lane. Blocking buffer: 5% non-fat dry milk in TBST. Detection: ECL Enhanced Kit. Exposure time: 120s.

实验步骤

访问官网浏览详情: www.ablybio.cn