

SPC25 Rabbit pAb

货号: **AYP20041**

产品信息

反应	Human
宿主	Rabbit
克隆性	Polyclonal
预测反应	
应用	WB
推荐浓度	WB: 1:500 - 1:1000
理论分子量	26kDa
实测分子量	26kDa
形式	Liquid
保存条件	Store at -20°C. Avoid freeze / thaw cycles. Buffer: PBS with 0.05% proclin300,50% glycerol,pH7.3.
偶联物	Unconjugated
阳性对照	HeLa,PC-3
细胞定位	Chromosome,Nucleus,centromere,kinetochore
纯化	Affinity purification

抗原信息

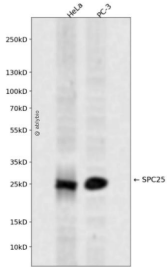
抗原信息	Recombinant fusion protein containing a sequence corresponding to amino acids 120-224 of human SPC25 (NP_065726.1).
序列	ANKANAERLKRLQKSADLYKDRLGLEIRKIYGEKLFIFTNIDPKNPESPFMFSLHLNEARDYEVSDSAPHLEGLAEFQENVR KTNNFSAFLANVRKAFTATVYN

靶点信息

研究背景	This gene encodes a protein that may be involved in kinetochore-microtubule interaction and spindle checkpoint activity.
基因ID	57405
基因名	SPC25

Swiss	Q9HBM1
别名	SPC25;AD024;SPBC25;hSpC25

产品验证



Western blot analysis of SPC25 expressed in HeLa,PC-3 using SPC25 Rabbit pAb at 1:1000. Secondary antibody: HRP Goat Anti-Rabbit IgG (H+L) at 1:5000. Lysates/proteins: 30ug per lane. Blocking buffer: 5% non-fat dry milk in TBST. Detection: ECL Enhanced Kit. Exposure time: 120s.

实验步骤

访问官网浏览详情: www.ablybio.cn