

# SLC35A1 Rabbit pAb

货号: **AYP20040**

## 产品信息

反应	Human
宿主	Rabbit
克隆性	Polyclonal
预测反应	
应用	WB
推荐浓度	<b>WB:</b> 1:500 - 1:2000
理论分子量	29kDa/36kDa
实测分子量	33KDa
形式	Liquid
保存条件	Store at -20°C. Avoid freeze / thaw cycles. Buffer: PBS with 0.02% sodium azide,50% glycerol,pH7.3.
偶联物	Unconjugated
阳性对照	Jurkat,MCF7,Mouse testis,Mouse kidney
细胞定位	Golgi apparatus membrane,Multi-pass membrane protein
纯化	Affinity purification

## 抗原信息

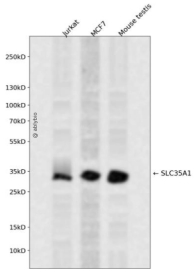
抗原信息	Recombinant fusion protein containing a sequence corresponding to amino acids 1-100 of human SLC35A1 (NP_006407.1).
序列	MAAPRDNVTLFLKLYCLAVMTLMAAVYTIALRYTRTSDKELYFSTTAVCITEVIKLLLSVGILAKETGSLGRFKASLRENVLGS PKELLKLSVPSLVYAV

## 靶点信息

研究背景	The protein encoded by this gene is found in the membrane of the Golgi apparatus, where it transports nucleotide sugars into the Golgi. One such nucleotide sugar is CMP-sialic acid, which is imported into the Golgi by the encoded protein and subsequently glycosylated. Defects in this gene are a cause of congenital disorder of glycosylation type 2F (CDG2F). Two transcript variants encoding different isoforms have been found for this gene.
基因ID	10559

基因名	SLC35A1
Swiss	P78382
别名	SLC35A1;CDG2F;CMPST;CST;hCST

## 产品验证



Western blot analysis of SLC35A1 expressed in Jurkat, MCF7, Mouse testis using SLC35A1 Rabbit pAb at 1:1000. Secondary antibody: HRP Goat Anti-Rabbit IgG (H+L) at 1:5000. Lysates/proteins: 30ug per lane. Blocking buffer: 5% non-fat dry milk in TBST. Detection: ECL Enhanced Kit. Exposure time: 120s.

## 实验步骤

访问官网浏览详情: [www.ablybio.cn](http://www.ablybio.cn)