

# CRB1 Rabbit pAb

货号: **AYP20036**

## 产品信息

反应	Human,Mouse
宿主	Rabbit
克隆性	Polyclonal
预测反应	
应用	WB IHC
推荐浓度	<b>WB:</b> 1:500 - 1:1000 <b>IHC:</b> 1:50 - 1:200
理论分子量	95kDa/104kDa/142kDa/151kDa/154kDa
实测分子量	150kDa
形式	Liquid
保存条件	Store at -20°C. Avoid freeze / thaw cycles. Buffer: PBS with 0.01% thiomersal,50% glycerol,pH7.3.
偶联物	Unconjugated
阳性对照	HeLa
细胞定位	Apical cell membrane,Secreted,Single-pass type I membrane protein
纯化	Affinity purification

## 抗原信息

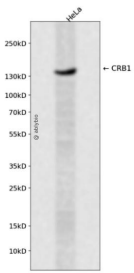
抗原信息	Recombinant fusion protein containing a sequence corresponding to amino acids 28-133 of human CRB1 (NP_957705.1).
序列	NKNNTRCLSNQCQNNSTCKDFSKDNDSCSDTANNLDKDCDNMKDPCFSNPCQGSATCVNTPGERSFLCKCPPGYSG TICETTIGSCGKNSCQHGGICHQDPIYPV

## 靶点信息

研究背景	This gene encodes a protein which is similar to the Drosophila crumbs protein and localizes to the inner segment of mammalian photoreceptors. In Drosophila crumbs localizes to the stalk of the fly photoreceptor and may be a component of the molecular scaffold that controls proper development of polarity in the eye. Mutations in this gene are associated with a severe form of retinitis pigmentosa, RP12, and with Leber congenital amaurosis. Alternate splicing results in multiple transcript variants, some protein coding and some non-protein coding.
------	--

基因ID	23418
基因名	CRB1
Swiss	P82279
别名	CRB1;LCA8;RP12

## 产品验证



Western blot analysis of CRB1 expressed in HeLa using CRB1 Rabbit pAb at 1:1000. Secondary antibody: HRP Goat Anti-Rabbit IgG (H+L) at 1:5000. Lysates/proteins: 30ug per lane. Blocking buffer: 5% non-fat dry milk in TBST. Detection: ECL Enhanced Kit. Exposure time: 120s.

## 实验步骤

访问官网浏览详情: [www.ablybio.cn](http://www.ablybio.cn)