

— ABLYBIO, Help Your Research



KLF14 Rabbit pAb

货号: **AYP20031**

产品信息

反应	Human,Mouse,Rat
宿主	Rabbit
克隆性	Polyclonal
预测反应	
应用	WB
推荐浓度	WB: 1:500 - 1:2000
理论分子量	
实测分子量	33kDa
形式	Liquid
保存条件	Store at -20°C. Avoid freeze / thaw cycles. Buffer: PBS with 0.01% thiomersal,50% glycerol,pH7.3.
偶联物	Unconjugated
阳性对照	HT-29,Mouse stomach,Rat stomach
细胞定位	nucleus
纯化	Affinity purification

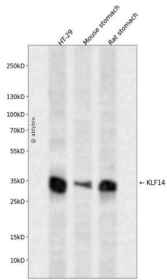
抗原信息

抗原信息	A synthetic peptide corresponding to a sequence within amino acids 200-300 of human KLF14 (NP_61963 8.2).
------	---

靶点信息

研究背景	This intronless gene encodes a member of the Kruppel-like family of transcription factors. The encoded protein functions as a transcriptional co-repressor, and is induced by transforming growth factor-beta (TGF-beta) to repress TGF-beta receptor II gene expression. This gene exhibits imprinted expression from the maternal allele in embryonic and extra-embryonic tissues. [provided by RefSeq, Jul 2013]
基因ID	136259
基因名	KLF14
Swiss	Q8TD94 (https://www.uniprot.org/uniprotkb/Q8TD94/entry)
别名	BTEB5,KLF14 Rabbit pAb,KLF14,Basic transcription element-binding protein 5,Transcription factor BTEB5

产品验证



Western blot analysis of KLF14 expressed in HT-29, Mouse stomach, Rat stomach using KLF14 Rabbit pAb at 1:1000. Secondary antibody: HRP Goat Anti-Rabbit IgG (H+L) at 1:5000. Lysates/proteins: 30ug per lane. Blocking buffer: 5% non-fat dry milk in TBST. Detection: ECL Enhanced Kit. Exposure time: 120s.

实验步骤

访问官网浏览详情: www.ablybio.cn (<https://www.ablybio.cn/www.ablybio.cn>)