

SEC24C Rabbit pAb

货号: AYP20020

产品信息

反应	Human
宿主	Rabbit
克隆性	Polyclonal
预测反应	
应用	WB IF/ICC
推荐浓度	WB: 1:500 - 1:2000 IF/ICC: 1:50 - 1:200
理论分子量	38kDa/118kDa
实测分子量	118kDa
形式	Liquid
保存条件	Store at -20°C. Avoid freeze / thaw cycles. Buffer: PBS with 0.01% thiomersal, 50% glycerol, pH7.3.
偶联物	Unconjugated
阳性对照	HeLa, HT-29, SKOV3
细胞定位	Cytoplasm, Endoplasmic reticulum membrane, Golgi apparatus membrane, perinuclear region
纯化	Affinity purification

抗原信息

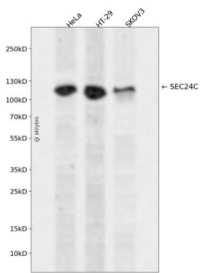
抗原信息	Recombinant fusion protein containing a sequence corresponding to amino acids 915-1094 of human SEC24C (NP_004913.2).
序列	DVLQPGA EVT TDDRAYVRQLVTSMDVTETNVFFYPRLPLTKSPVESTTEPPAVRASEERLSNGDIYLL ENGLNLF LWVGA SVQQGVVQSLF SVSFSQITSGLSVLPVLDNPLSKKVRGLIDSLRAQRSRYMKLTVVKQEDKMEMLFKHFLVEDKSLSGG ASYVDFLCHMHKEIRQLLS

靶点信息

研究背景	The protein encoded by this gene is a member of the SEC24 subfamily of the SEC23/SEC24 family, which is involved in vesicle trafficking. The encoded protein has similarity to yeast Sec24p component of COPII. COPII is the coat protein complex responsible for vesicle budding from the ER. The product of this gene may play a role in shaping the vesicle, as well as in cargo selection and concentration. Alternatively spliced transcript variants encoding the same protein have been identified.
------	--

基因ID	9632
基因名	SEC24C
Swiss	P53992
别名	SEC24C

产品验证



Western blot analysis of SEC24C expressed in HeLa, HT-29, SKOV3 using SEC24C Rabbit pAb at 1:1000. Secondary antibody: HRP Goat Anti-Rabbit IgG (H+L) at 1:5000. Lysates/proteins: 30ug per lane. Blocking buffer: 5% non-fat dry milk in TBST. Detection: ECL Enhanced Kit. Exposure time: 120s.

实验步骤

访问官网浏览详情: www.ablybio.cn