

# WASF3 Rabbit pAb

货号: **AYP20015**

## 产品信息

反应	Human,Mouse,Rat
宿主	Rabbit
克隆性	Polyclonal
预测反应	
应用	WB
推荐浓度	<b>WB:</b> 1:500 - 1:2000
理论分子量	55kDa
实测分子量	55kDa
形式	Liquid
保存条件	Store at -20°C. Avoid freeze / thaw cycles. Buffer: PBS with 0.01% thiomersal,50% glycerol,pH7.3.
偶联物	Unconjugated
阳性对照	Mouse brain,Rat brain
细胞定位	cytoskeleton,extracellular exosome,glial cell projection,glutamatergic synapse,postsynapse,SCAR complex
纯化	Affinity purification

## 抗原信息

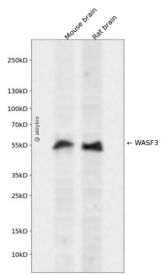
抗原信息	A synthetic peptide corresponding to a sequence within amino acids 200-300 of human WASF3 (NP_001278894.1).
序列	RTRKEEWERRKMGIEFMSDAKKLEQAGSAKEDRVPSGSHASDVTDYSYPATPNHSLHPQPVTPSYAAGDVPPHGPASQAAEHEYRPPSASARHMALNRPQQ

## 靶点信息

研究背景	This gene encodes a member of the Wiskott-Aldrich syndrome protein family. The gene product is a protein that forms a multiprotein complex that links receptor kinases and actin. Binding to actin occurs through a C-terminal verprolin homology domain in all family members. The multiprotein complex serves to transduce signals that involve changes in cell shape, motility or function. A pseudogene of this gene has been defined on chromosome 6. Alternative splicing results in multiple transcript variants.
------	--

基因ID	10810
基因名	WASF3
Swiss	Q9UPY6
别名	WASF3;Brush-1;SCAR3;WAVE3

## 产品验证



Western blot analysis of WASF3 expressed in Mouse brain,Rat brain using WASF3 Rabbit pAb at 1:1000. Secondary antibody: HRP Goat Anti-Rabbit IgG (H+L) at 1:5000. Lysates/proteins: 30ug per lane. Blocking buffer: 5% non-fat dry milk in TBST. Detection: ECL Enhanced Kit. Exposure time: 120s.

## 实验步骤

访问官网浏览详情: [www.ablybio.cn](http://www.ablybio.cn)