

IL22RA1 Rabbit pAb

货号: **AYP20006**

产品信息

反应	Human,Mouse,Rat
宿主	Rabbit
克隆性	Polyclonal
预测反应	
应用	WB
推荐浓度	WB: 1:100 - 1:500
理论分子量	63kDa
实测分子量	68KDa
形式	Liquid
保存条件	Store at -20°C. Avoid freeze / thaw cycles. Buffer: PBS with 0.02% sodium azide,50% glycerol,pH7.3.
偶联物	Unconjugated
阳性对照	293T,HepG2,A-549,BxPC-3,Mouse liver,Rat liver
细胞定位	Membrane,Single-pass type I membrane protein
纯化	Affinity purification

抗原信息

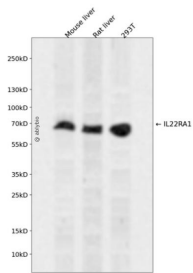
抗原信息	Recombinant fusion protein containing a sequence corresponding to amino acids 16-230 of human IL22RA1 (NP_067081.2).
序列	HAPEDPSDLLQHVKFQSSNFENILTWDSGPEGTPDTVYSIEYKTYGERDWWAKKGCQRITRKSCNLTVETGNLTELYARV TAVSAGGRSATKMTDRFSSLQHTTLKPPDVTCISKVRSIQMIVHPTPTPIRAGDGHRLTLEDIFHDLFYHLELQVNRTYQMH LGGKQREYEFFGLTPDTEFLGTIMICVPTWAKESAPYMCRVKTLPDRTWTYS

靶点信息

研究背景	The protein encoded by this gene belongs to the class II cytokine receptor family, and has been shown to be a receptor for interleukin 22 (IL22). IL22 receptor is a protein complex that consists of this protein and interleukin 10 receptor, beta (IL10BR/CRFB4), a subunit also shared by the receptor complex for interleukin 10 (IL10). This gene and interleukin 28 receptor, alpha (IL28RA) form a cytokine receptor gene cluster in the chromosomal region 1p36.
------	---

基因ID	58985
基因名	IL22RA1
Swiss	Q8N6P7
别名	IL22RA1;CRF2-9;IL22R;IL22R1

产品验证



Western blot analysis of IL22RA1 expressed in Mouse liver,Rat liver,293T using IL22RA1 Rabbit pAb at 1:1000. Secondary antibody: HRP Goat Anti-Rabbit IgG (H+L) at 1:5000. Lysates/proteins: 30ug per lane. Blocking buffer: 5% non-fat dry milk in TBST. Detection: ECL Enhanced Kit. Exposure time: 120s.

实验步骤

访问官网浏览详情: www.ablybio.cn