

# ZMPSTE24 Rabbit pAb

货号: **AYP20001**

## 产品信息

反应	Human,Mouse,Rat
宿主	Rabbit
克隆性	Polyclonal
预测反应	
应用	WB IHC
推荐浓度	<b>WB:</b> 1:500 - 1:2000 <b>IHC:</b> 1:50 - 1:200
理论分子量	54kDa
实测分子量	54kDa
形式	Liquid
保存条件	Store at -20°C. Avoid freeze / thaw cycles. Buffer: PBS with 0.01% thiomersal,50% glycerol,pH7.3.
偶联物	Unconjugated
阳性对照	SKOV3
细胞定位	Endoplasmic reticulum membrane,Multi-pass membrane protein,Nucleus inner membrane
纯化	Affinity purification

## 抗原信息

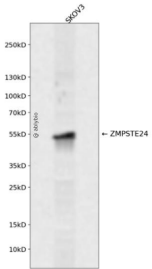
抗原信息	A synthetic peptide corresponding to a sequence within amino acids 200-300 of human ZMPSTE24 (NP_005848.2).
序列	AWLFTLVVSLVLTITYADYIAPLFDKFTPLPEGKLEEEIVMAKSIDFPLTKVYVVEGSKRSSHSNAYFYGFFKNKRIVLFDTLLEEYSVLNKDIQEDSGM

## 靶点信息

研究背景	This gene encodes a member of the peptidase M48A family. The encoded protein is a zinc metalloproteinase involved in the two step post-translational proteolytic cleavage of carboxy terminal residues of farnesylated prelamin A to form mature lamin A. Mutations in this gene have been associated with mandibuloacral dysplasia and restrictive dermopathy.
基因ID	10269

基因名	ZMPSTE24
Swiss	O75844
别名	ZMPSTE24;FACE-1;FACE1;HGPS;PRO1;STE24;Ste24p

## 产品验证



Western blot analysis of ZMPSTE24 expressed in SKOV3 using ZMPSTE24 Rabbit pAb at 1:1000. Secondary antibody: HRP Goat Anti-Rabbit IgG (H+L) at 1:5000. Lysates/proteins: 30ug per lane. Blocking buffer: 5 % non-fat dry milk in TBST. Detection: ECL Enhanced Kit. Exposure time: 120s.

## 实验步骤

访问官网浏览详情: [www.ablybio.cn](http://www.ablybio.cn)