

GPR22 Rabbit pAb

货号: **AYP19999**

产品信息

反应	Human,Mouse,Rat
宿主	Rabbit
克隆性	Polyclonal
预测反应	
应用	WB IF/ICC
推荐浓度	WB: 1:500 - 1:2000 IF/ICC: 1:50 - 1:200
理论分子量	49kDa
实测分子量	55kDa
形式	Liquid
保存条件	Store at -20°C. Avoid freeze / thaw cycles. Buffer: PBS with 0.01% thiomersal,50% glycerol,pH7.3.
偶联物	Unconjugated
阳性对照	U-87MG,U-251MG,SH-SY5Y,HepG2,Mouse heart,Mouse brain,Rat heart,Rat brain
细胞定位	plasma membrane
纯化	Affinity purification

抗原信息

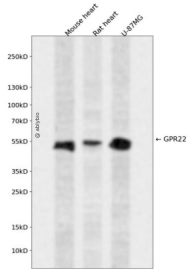
抗原信息	A synthetic peptide corresponding to a sequence within amino acids 1-100 of human GPR22 (NP_005286.2).
序列	MCFSPILEINMQSESNITVRDDIDDINTNMYQPLSYPLSFQVSLTGFLMLEIVLGLGSNLTVLVLYCMKSNLINSVSNIIITMNLHVLVDVIIICVGCIPLTI

靶点信息

研究背景	This gene is a member of the G-protein coupled receptor 1 family and encodes a multi-pass membrane protein.
基因ID	2845

基因名	GPR22
Swiss	Q99680
别名	GPR22

产品验证



Western blot analysis of GPR22 expressed in Mouse heart,Rat heart,U-87MG using GPR22 Rabbit pAb at 1:1000. Secondary antibody: HRP Goat Anti-Rabbit IgG (H+L) at 1:5000. Lysates/proteins: 30ug per lane. Blocking buffer: 5% non-fat dry milk in TBST. Detection: ECL Enhanced Kit. Exposure time: 120s.

实验步骤

访问官网浏览详情: www.ablybio.cn