

CRH Rabbit pAb

货号: **AYP19990**

产品信息

反应	Human,Mouse,Rat
宿主	Rabbit
克隆性	Polyclonal
预测反应	
应用	WB
推荐浓度	WB: 1:500 - 1:2000
理论分子量	21kDa
实测分子量	30kDa
形式	Liquid
保存条件	Store at -20°C. Avoid freeze / thaw cycles. Buffer: PBS with 0.02% sodium azide,50% glycerol,pH7.3.
偶联物	Unconjugated
阳性对照	SH-SY5Y,Mouse liver,Mouse brain,Rat liver,Rat brain
细胞定位	Secreted
纯化	Affinity purification

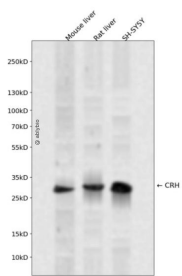
抗原信息

抗原信息	Recombinant fusion protein containing a sequence corresponding to amino acids 25-194 of human CRH (NP_000747.1).
序列	LLSRGPVPGARQAPQHQPQLDFFQPPQSEQPQQQARPVLLRMGEEYFLRLGNLNKSPAAPLSPASSLLAGGSGSRPSP EQATANFFRVLLQQLLPRRSLDSPAALAERGARNALGGHQEAPERERRSEPPISLDLTFHLLREVLEMARAEQLAQQAHS NRKLMEII

靶点信息

研究背景	This gene encodes a member of the corticotropin-releasing factor family. The encoded preproprotein is proteolytically processed to generate the mature neuropeptide hormone. In response to stress, this hormone is secreted by the paraventricular nucleus (PVN) of the hypothalamus, binds to corticotropin releasing hormone receptors and stimulates the release of adrenocorticotrophic hormone from the pituitary gland. Marked reduction in this protein has been observed in association with Alzheimer's disease. Autosomal recessive hypothalamic corticotropin deficiency has multiple and potentially fatal metabolic consequences including hypoglycemia and hepatitis. In addition to production in the hypothalamus, this protein is also synthesized in peripheral tissues, such as T lymphocytes, and is highly expressed in the placenta. In the placenta it is a marker that determines the length of gestation and the timing of parturition and delivery. A rapid increase in circulating levels of the hormone occurs at the onset of parturition, suggesting that, in addition to its metabolic functions, this protein may act as a trigger for parturition.
基因ID	1392
基因名	CRH
Swiss	P06850
别名	CRH;CRF;CRH1

产品验证



Western blot analysis of CRH expressed in Mouse liver, Rat liver, SH-SY5Y using CRH Rabbit pAb at 1:1000. Secondary antibody: HRP Goat Anti-Rabbit IgG (H+L) at 1:5000. Lysates/proteins: 30ug per lane. Blocking buffer: 5% non-fat dry milk in TBST. Detection: ECL Enhanced Kit. Exposure time: 120s.

实验步骤

访问官网浏览详情: www.ablybio.cn