

KEAP1 Rabbit pAb

货号: **AYP19984**

产品信息

反应	Human,Mouse,Rat
宿主	Rabbit
克隆性	Polyclonal
预测反应	
应用	WB IF/ICC
推荐浓度	WB: 1:500 - 1:1000 IF/ICC: 1:50 - 1:200
理论分子量	69kDa
实测分子量	60KDa
形式	Liquid
保存条件	Store at -20°C. Avoid freeze / thaw cycles. Buffer: PBS with 0.05% proclin300,50% glycerol,pH7.3.
偶联物	Unconjugated
阳性对照	Mouse brain,Rat brain
细胞定位	Cytoplasm,Nucleus
纯化	Affinity purification

抗原信息

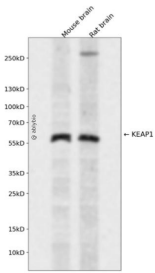
抗原信息	Recombinant fusion protein containing a sequence corresponding to amino acids 320-510 of human KEAP 1 (NP_036421.2).
序列	RAPKVGRLIYTAGGYFRQSLSYLEAYNPSDGTWLRDLADLQVPRSLAGCVVGGLLYAVGGRNNSPDGNTDSSALDCYNP MTNQWSPCAPMSVPRNRIGVGVIDGHIYAVGGSHGCIHHNSVERYEPERDEWHLVAPMLTRRIGVGVAVLNRLLYAVGG FDGTNRLNSAECYPERNEWMITAMNTIRSGA

靶点信息

研究背景	This gene encodes a protein containing KELCH-1 like domains, as well as a BTB/POZ domain. Kelch-like E CH-associated protein 1 interacts with NF-E2-related factor 2 in a redox-sensitive manner and the dissociation of the proteins in the cytoplasm is followed by transportation of NF-E2-related factor 2 to the nucleus. This interaction results in the expression of the catalytic subunit of gamma-glutamylcysteine synthetase. Two alternatively spliced transcript variants encoding the same isoform have been found for this gene.
------	---

基因ID	9817
基因名	KEAP1
Swiss	Q14145
别名	KEAP1;INrf2;KLHL19

产品验证



Western blot analysis of KEAP1 expressed in Mouse brain,Rat brain using KEAP1 Rabbit pAb at 1:1000. Secondary antibody: HRP Goat Anti-Rabbit IgG (H+L) at 1:5000. Lysates/proteins: 30ug per lane. Blocking buffer: 5% non-fat dry milk in TBST. Detection: ECL Enhanced Kit. Exposure time: 120s.

实验步骤

访问官网浏览详情: www.ablybio.cn