

Lyn Rabbit pAb

货号: **AYP19972**

产品信息

反应	Human,Mouse
宿主	Rabbit
克隆性	Polyclonal
预测反应	
应用	WB IHC
推荐浓度	WB: 1:500 - 1:2000 IHC: 1:50 - 1:100
理论分子量	56kDa/58kDa
实测分子量	56kDa
形式	Liquid
保存条件	Store at -20°C. Avoid freeze / thaw cycles. Buffer: PBS with 0.02% sodium azide,50% glycerol,pH7.3.
偶联物	Unconjugated
阳性对照	A-549,Mouse lung,Mouse liver,Mouse kidney
细胞定位	Cell membrane,Cytoplasm,Golgi apparatus,Lipid-anchor,Membrane,Nucleus,perinuclear region
纯化	Affinity purification

抗原信息

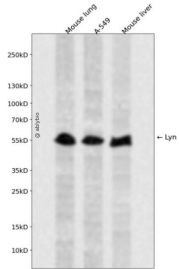
抗原信息	A synthetic peptide corresponding to a sequence within amino acids 1-100 of human Lyn (NP_002341.1).
序列	MGCIKSKGKDSLSDDGVDLKTQPVRNTERTIYVRDPTSNKQQRVPESQLLPGQRFQTKDPEEQGDIVVALYPYDGIHPD DLSFKKGEKMKVLEEHGEWW

靶点信息

研究背景	This gene encodes a tyrosine protein kinase, which maybe involved in the regulation of mast cell degranulation, and erythroid differentiation. Alternatively spliced transcript variants encoding different isoforms have been found for this gene.
基因ID	4067

基因名	LYN
Swiss	P07948
别名	LYN;JTK8;p53Lyn;p56Lyn

产品验证



Western blot analysis of Lyn expressed in Mouse lung,A-549,Mouse liver using Lyn Rabbit pAb at 1:1000. Secondary antibody: HRP Goat Anti-Rabbit IgG (H+L) at 1:5000. Lysates/proteins: 30ug per lane. Blocking buffer: 5% non-fat dry milk in TBST. Detection: ECL Enhanced Kit. Exposure time: 120s.

实验步骤

访问官网浏览详情: www.ablybio.cn