

# Bcl-W Rabbit pAb

货号: **AYP19955**

## 产品信息

反应	Human,Mouse,Rat
宿主	Rabbit
克隆性	Polyclonal
预测反应	
应用	WB
推荐浓度	<b>WB:</b> 1:500 - 1:1000
理论分子量	20kDa/37kDa
实测分子量	18KDa
形式	Liquid
保存条件	Store at -20°C. Avoid freeze / thaw cycles. Buffer: PBS with 0.05% proclin300,50% glycerol,pH7.3.
偶联物	Unconjugated
阳性对照	Mouse brain,Rat brain,Rat kidney
细胞定位	Mitochondrion membrane,Peripheral membrane protein
纯化	Affinity purification

## 抗原信息

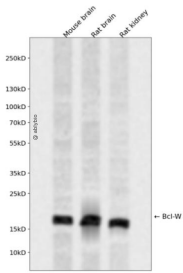
抗原信息	A synthetic peptide corresponding to a sequence within amino acids 1-100 of human Bcl-W (NP_004041.2).
序列	MATPASAPDTRALVADFGYKLRQKGYVCGAGPGEGPAADPLHQAMRAAGDEFETRFRRTFSDLAAQLHVTPGSAQQR FTQVSDELFQGGPNWGRLVAFF

## 靶点信息

研究背景	This gene encodes a member of the BCL-2 protein family. The proteins of this family form hetero- or homodimers and act as anti- and pro-apoptotic regulators. Expression of this gene in cells has been shown to contribute to reduced cell apoptosis under cytotoxic conditions. Studies of the related gene in mice indicated a role in the survival of NGF- and BDNF-dependent neurons. Mutation and knockout studies of the mouse gene demonstrated an essential role in adult spermatogenesis. Alternative splicing results in multiple transcript variants. Read-through transcription also exists between this gene and the neighboring downstream PABPN1 (poly(A) binding protein, nuclear 1) gene.
------	---

基因ID	599
基因名	BCL2L2
Swiss	Q92843
别名	BCL2L2;BCL-W;BCL2-L-2;BCLW;PPP1R51

## 产品验证



Western blot analysis of Bcl-W expressed in Mouse brain,Rat brain,Rat kidney using Bcl-W Rabbit pAb at 1:1000. Secondary antibody: HRP Goat Anti-Rabbit IgG (H+L) at 1:5000. Lysates/proteins: 30ug per lane. Blocking buffer: 5% non-fat dry milk in TBST. Detection: ECL Enhanced Kit. Exposure time: 120s.

## 实验步骤

访问官网浏览详情: [www.ablybio.cn](http://www.ablybio.cn)