

BCL3 Rabbit pAb

货号: **AYP19953**

产品信息

反应	Human,Mouse,Rat
宿主	Rabbit
克隆性	Polyclonal
预测反应	
应用	WB IF/ICC
推荐浓度	WB: 1:500 - 1:1000 IF/ICC: 1:50 - 1:200
理论分子量	47kDa
实测分子量	60kDa
形式	Liquid
保存条件	Store at -20°C. Avoid freeze / thaw cycles. Buffer: PBS with 0.01% thiomersal,50% glycerol,pH7.3.
偶联物	Unconjugated
阳性对照	Raji,293T
细胞定位	Cytoplasm,Nucleus,perinuclear region
纯化	Affinity purification

抗原信息

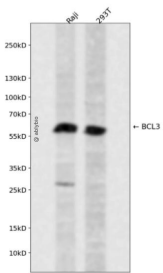
抗原信息	A synthetic peptide corresponding to a sequence within amino acids 300-400 of human BCL3 (NP_005169.2).
序列	ANVNAQMYSGSSALHSASGRGLLPLVRTLVRSADSSLNCHNDTPLMVARSRVIDILRGKATRPASTSQDPSPDRSANTSPSSRLSSNGLLSASPS

靶点信息

研究背景	This gene is a proto-oncogene candidate. It is identified by its translocation into the immunoglobulin alpha a-locus in some cases of B-cell leukemia. The protein encoded by this gene contains seven ankyrin repeats, which are most closely related to those found in I kappa B proteins. This protein functions as a transcriptional co-activator that activates through its association with NF-kappa B homodimers. The expression of this gene can be induced by NF-kappa B, which forms a part of the autoregulatory loop that controls the nuclear residence of p50 NF-kappa B.
------	---

基因ID	602
基因名	BCL3
Swiss	P20749
别名	BCL3;BCL4;D19S37

产品验证



Western blot analysis of BCL3 expressed in Raji,293T using BCL3 Rabbit pAb at 1:1000. Secondary antibody: HRP Goat Anti-Rabbit IgG (H+L) at 1:5000. Lysates/proteins: 30ug per lane. Blocking buffer: 5% non-fat dry milk in TBST. Detection: ECL Enhanced Kit. Exposure time: 120s.

实验步骤

访问官网浏览详情: www.ablybio.cn