

HEPACAM Rabbit pAb

货号: **AYP19951**

产品信息

反应	Human,Mouse,Rat
宿主	Rabbit
克隆性	Polyclonal
预测反应	
应用	WB
推荐浓度	WB: 1:500 - 1:2000
理论分子量	40kDa/46kDa
实测分子量	70kDa
形式	Liquid
保存条件	Store at -20°C. Avoid freeze / thaw cycles. Buffer: PBS with 0.01% thiomersal,50% glycerol,pH7.3.
偶联物	Unconjugated
阳性对照	293T,HepG2,MCF7,SH-SY5Y,SGC-7901,Mouse brain,Mouse liver,Rat brain,Rat liver
细胞定位	Cytoplasm,Cytoplasmic side,Membrane,Single-pass type I membrane protein
纯化	Affinity purification

抗原信息

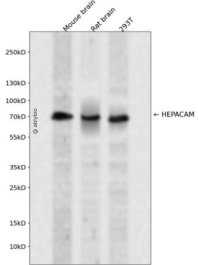
抗原信息	Recombinant fusion protein containing a sequence corresponding to amino acids 35-245 of human HEPACAM (NP_689935.2).
序列	NITSPVRLIHGTVGKSALLSVQYSSTSSDRPVVKWQLKRDKPVTVVQSIGTEVIGTLRPDYRDRIRLFENGSLLLSDLQLAD EGTYEVEISITDDTFTGEKTINLTVDPISRQVLVASTTVLELSEFTLNCSHENGTKPSYTWLKDGGKPLLNSRMLLSPDQ KVLITITRVLMEDDDLYSVMENPISQGRSLPVKITVYRRSSLYIIL

靶点信息

研究背景	The protein encoded by this gene is a single-pass type I membrane protein that localizes to the cytoplasmic side of the cell membrane. The encoded protein acts as a homodimer and is involved in cell motility and cell-matrix interactions. The expression of this gene is downregulated or undetectable in many cancer cell lines, so this may be a tumor suppressor gene.
基因ID	220296

基因名	HEPACAM
Swiss	Q14CZ8
别名	HEPACAM;GlialCAM;MLC2A;MLC2B

产品验证



Western blot analysis of HEPACAM expressed in Mouse brain,Rat brain,293T using HEPACAM Rabbit pAb at 1:1000. Secondary antibody: HRP Goat Anti-Rabbit IgG (H+L) at 1:5000. Lysates/proteins: 30ug per lane. Blocking buffer: 5% non-fat dry milk in TBST. Detection: ECL Enhanced Kit. Exposure time: 120 S.

实验步骤

访问官网浏览详情: www.ablybio.cn