

# RheB Rabbit pAb

货号: **AYP19932**

## 产品信息

反应	Human,Mouse,Rat
宿主	Rabbit
克隆性	Polyclonal
预测反应	
应用	WB IF/ICC
推荐浓度	<b>WB:</b> 1:500 - 1:1000 <b>IF/ICC:</b> 1:50 - 1:200
理论分子量	20kDa
实测分子量	17KDa
形式	Liquid
保存条件	Store at -20°C. Avoid freeze / thaw cycles. Buffer: PBS with 0.05% proclin300,50% glycerol,pH7.3.
偶联物	Unconjugated
阳性对照	DU145,U-87MG,Mouse brain
细胞定位	Cytoplasm,Cytoplasmic side,Endomembrane system,Endoplasmic reticulum membrane,Golgi apparatus membrane,Lipid-anchor,cytosol
纯化	Affinity purification

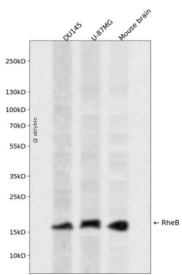
## 抗原信息

抗原信息	Recombinant fusion protein containing a sequence corresponding to amino acids 1-180 of human RheB ( NP_005605.1).
序列	MPQSKSRKIAILGYRSVGKSSLTIQFVEGQFVDSYDPTIENTFTKLITVNGQEYHLQLVDTAGQDEYSIFPQTYSIDINGYILV YSVTSIKSFEVIKVIHGKLLDMVGKQVPIMLVGNKKDLHMERSVISYEEGKALAESWNAAFLESSAKENQTAVDVFRRILEAE KMDGAASQGKSS

## 靶点信息

研究背景	This gene is a member of the small GTPase superfamily and encodes a lipid-anchored, cell membrane protein with five repeats of the RAS-related GTP-binding region. This protein is vital in regulation of growth and cell cycle progression due to its role in the insulin/TOR/S6K signaling pathway. The protein has GTPase activity and shuttles between a GDP-bound form and a GTP-bound form, and farnesylation of the protein is required for this activity. Three pseudogenes have been mapped, two on chromosome 10 and one on chromosome 22.
基因ID	6009
基因名	RHEB
Swiss	Q15382
别名	RHEB;RHEB2

## 产品验证



Western blot analysis of RheB expressed in DU145,U-87MG,Mouse brain using RheB Rabbit pAb at 1:1000. Secondary antibody: HRP Goat Anti-Rabbit IgG (H+L) at 1:5000. Lysates/proteins: 30ug per lane. Blocking buffer: 5% non-fat dry milk in TBST. Detection: ECL Enhanced Kit. Exposure time: 120s.

## 实验步骤

访问官网浏览详情: [www.ablybio.cn](http://www.ablybio.cn)