

SMPD2 Rabbit pAb

货号: **AYP19931**

产品信息

反应	Human,Mouse,Rat
宿主	Rabbit
克隆性	Polyclonal
预测反应	
应用	WB IHC
推荐浓度	WB: 1:500 - 1:2000 IHC: 1:100 - 1:200
理论分子量	47kDa
实测分子量	50kDa
形式	Liquid
保存条件	Store at -20°C. Avoid freeze / thaw cycles. Buffer: PBS with 0.01% thiomersal,50% glycerol,pH7.3.
偶联物	Unconjugated
阳性对照	Mouse liver,Rat liver
细胞定位	Membrane,Multi-pass membrane protein
纯化	Affinity purification

抗原信息

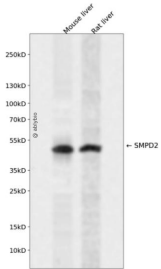
抗原信息	A synthetic peptide corresponding to a sequence within amino acids 150-250 of human SMPD2 (NP_003071.2).
序列	AHRVAQAWELAQFIHHTSKKADVLLCGDLNMHPEDLGCCLLKEWTGLHDAYLETRDFKGSEEGNTMVPKNCYVSQQE LKPFPFGVRIDYVLYKAVSGFYI

靶点信息

研究背景	This gene encodes a protein which was initially identified as a sphingomyelinase based on sequence similarity between bacterial sphingomyelinases and a yeast protein. Subsequent studies showed that its biological function is less likely to be as a sphingomyelinase and instead as a lysophospholipase.
基因ID	6610

基因名	SMPD2
Swiss	O60906
别名	SMPD2;ISC1;NSMASE;NSMASE1

产品验证



Western blot analysis of SMPD2 expressed in Mouse liver,Rat liver using SMPD2 Rabbit pAb at 1:1000. Secondary antibody: HRP Goat Anti-Rabbit IgG (H+L) at 1:5000. Lysates/proteins: 30ug per lane. Blocking buffer: 5% non-fat dry milk in TBST. Detection: ECL Enhanced Kit. Exposure time: 120s.

实验步骤

访问官网浏览详情: www.ablybio.cn