

SLC6A11 Rabbit pAb

货号: **AYP19922**

产品信息

反应	Human,Mouse,Rat
宿主	Rabbit
克隆性	Polyclonal
预测反应	
应用	WB
推荐浓度	WB: 1:500 - 1:2000
理论分子量	23kDa/70kDa
实测分子量	62kDa
形式	Liquid
保存条件	Store at -20°C. Avoid freeze / thaw cycles. Buffer: PBS with 0.01% thiomersal,50% glycerol,pH7.3.
偶联物	Unconjugated
阳性对照	SH-SY5Y,LO2,Mouse brain,Rat brain
细胞定位	Membrane,Multi-pass membrane protein
纯化	Affinity purification

抗原信息

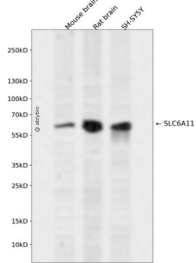
抗原信息	Recombinant fusion protein containing a sequence corresponding to amino acids 1-60 of human SLC6A11 (NP_055044.1).
序列	MTAEKALPLGNGKAAEEARESEAPGGGCSSGGAAPARHPRVKRDKAVHERGHWNKVEFV

靶点信息

研究背景	The protein encoded by this gene is a sodium-dependent transporter that uptakes gamma-aminobutyric acid (GABA), an inhibitory neurotransmitter, which ends the GABA neurotransmission. Defects in this gene may result in epilepsy, behavioral problems, or intellectual problems. Two transcript variants encoding different isoforms have been found for this gene.
基因ID	6538

基因名	SLC6A11
Swiss	P48066
别名	SLC6A11;GAT-3;GAT3;GAT4

产品验证



Western blot analysis of SLC6A11 expressed in Mouse brain,Rat brain,SH-SY5Y using SLC6A11 Rabbit p Ab at 1:1000. Secondary antibody: HRP Goat Anti-Rabbit IgG (H+L) at 1:5000. Lysates/proteins: 30ug per lane. Blocking buffer: 5% non-fat dry milk in TBST. Detection: ECL Enhanced Kit. Exposure time: 12 0s.

实验步骤

访问官网浏览详情: www.ablybio.cn