

CADM2 Rabbit pAb

货号: **AYP19910**

产品信息

反应	Mouse
宿主	Rabbit
克隆性	Polyclonal
预测反应	
应用	WB
推荐浓度	WB: 1:500 - 1:2000
理论分子量	31kDa/35kDa/44kDa/47kDa
实测分子量	48kDa
形式	Liquid
保存条件	Store at -20°C. Avoid freeze / thaw cycles. Buffer: PBS with 0.01% thiomersal,50% glycerol,pH7.3.
偶联物	Unconjugated
阳性对照	Mouse liver
细胞定位	Cell junction,Cell membrane,Cell projection,Single-pass type I membrane protein,axon,synapse
纯化	Affinity purification

抗原信息

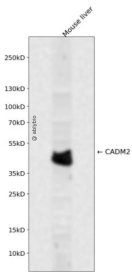
抗原信息	Recombinant fusion protein containing a sequence corresponding to amino acids 220-335 of human CAD M2 (NP_001161147.1).
序列	NATPQVAMQVLEIHYTPSVKIIPSTPFQEGQLILTCEKSGKPLPEPVLWTKDGGELPDPDRMVVSGRELNILFLNKTDNG TYRCEATNTIGQSSAEYVLIVHDPNALAGQNGPD

靶点信息

研究背景	This gene encodes a member of the synaptic cell adhesion molecule 1 (SynCAM) family which belongs to the immunoglobulin (Ig) superfamily. The encoded protein has three Ig-like domains and a cytosolic prote in 4.1 binding site near the C-terminus. Proteins belonging to the protein 4.1 family crosslink spectrin and interact with other cytoskeletal proteins. Multiple transcript variants encoding different isoforms have be en found for this gene.
基因ID	253559

基因名	CADM2
Swiss	Q8N3J6
别名	CADM2;IGSF4D;NECL3;Necl-3;SynCAM 2;synCAM2;SynCAM2

产品验证



Western blot analysis of CADM2 expressed in Mouse liver using CADM2 Rabbit pAb at 1:1000. Secondary antibody: HRP Goat Anti-Rabbit IgG (H+L) at 1:5000. Lysates/proteins: 30ug per lane. Blocking buffer: 5% non-fat dry milk in TBST. Detection: ECL Enhanced Kit. Exposure time: 120s.

实验步骤

访问官网浏览详情: www.ablybio.cn