

# Phospho-alt-RPL36-S142 Rabbit pAb

货号: AYP19900

## 产品信息

反应	Human
宿主	Rabbit
克隆性	Polyclonal
预测反应	
应用	DB WB
推荐浓度	<b>DB:</b> 1:500 - 1:1000 <b>WB:</b> 1:500 - 1:2000
理论分子量	
实测分子量	14-18kD
形式	Liquid
保存条件	Store at -20°C. Avoid freeze / thaw cycles. Buffer: PBS with 0.01% thiomersal, 50% glycerol, pH7.3.
偶联物	Unconjugated
阳性对照	
细胞定位	
纯化	Affinity purification

## 抗原信息

抗原信息	A synthetic phosphorylated peptide around S142 of alt-RPL36.
序列	SPSPA

## 靶点信息

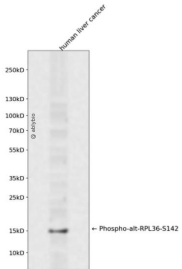
研究背景	Alt-RPL36 is a protein co-encoded with human RPL36. Alt-RPL36 partially localizes to the endoplasmic reticulum, where it interacts with TMEM24, which transports the phosphatidylinositol 4,5-bisphosphate (PI(4,5)P2) precursor phosphatidylinositol from the endoplasmic reticulum to the plasma membrane. Alt-RPL36 contains four phosphoserine residues, point mutations of which abolish interaction with TMEM24 and, consequently, alt-RPL36 effects on PI3K signaling and cell size.
基因ID	
基因名	

---

Swiss	
别名	

## 产品验证

---



Western blot analysis of Phospho-act-RPL36-S142 expressed in human liver cancer using Phospho-act-RP L36-S142 Rabbit pAb at 1:1000. Secondary antibody: HRP Goat Anti-Rabbit IgG (H+L) at 1:5000. Lysate s/proteins: 30ug per lane. Blocking buffer: 5% non-fat dry milk in TBST. Detection: ECL Enhanced Kit. Exposure time: 120s.

## 实验步骤

访问官网浏览详情: [www.ablybio.cn](http://www.ablybio.cn)