

KCNE1 Rabbit pAb

货号: **AYP19899**

产品信息

反应	Human,Mouse
宿主	Rabbit
克隆性	Polyclonal
预测反应	
应用	WB
推荐浓度	WB: 1:500 - 1:2000
理论分子量	14kDa
实测分子量	16kDa
形式	Liquid
保存条件	Store at -20°C. Avoid freeze / thaw cycles. Buffer: PBS with 0.02% sodium azide,50% glycerol,pH7.3.
偶联物	Unconjugated
阳性对照	H460,293T,U937,Mouse brain
细胞定位	Cell membrane,Single-pass type I membrane protein
纯化	Affinity purification

抗原信息

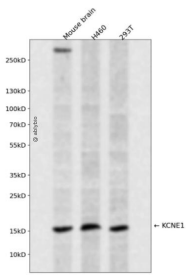
抗原信息	A synthetic peptide corresponding to a sequence within amino acids 1-100 of human KCNE1 (NP_000210.2).
序列	MILSNTTAVTPFLTKLWQETVQGGNMSGLARRSPRSSDGKLEALYVLMVLGFFGFFTLGIMLSYIRSKLEHSNDPFNVY IESDAWQEKDKAYVQARVL

靶点信息

研究背景	The product of this gene belongs to the potassium channel KCNE family. Potassium ion channels are essential to many cellular functions and show a high degree of diversity, varying in their electrophysiologic and pharmacologic properties. This gene encodes a transmembrane protein known to associate with the product of the KVLQT1 gene to form the delayed rectifier potassium channel. Mutation in this gene are associated with both Jervell and Lange-Nielsen and Romano-Ward forms of long-QT syndrome. Alternatively spliced transcript variants encoding the same protein have been identified.
------	---

基因ID	3753
基因名	KCNE1
Swiss	P15382
别名	KCNE1;ISK;JLNS;JLNS2;LQT2/5;LQT5;MinK

产品验证



Western blot analysis of KCNE1 expressed in Mouse brain, H460, 293T using KCNE1 Rabbit pAb at 1:1000. Secondary antibody: HRP Goat Anti-Rabbit IgG (H+L) at 1:5000. Lysates/proteins: 30ug per lane. Blocking buffer: 5% non-fat dry milk in TBST. Detection: ECL Enhanced Kit. Exposure time: 120s.

实验步骤

访问官网浏览详情: www.ablybio.cn