

# BET1L Rabbit pAb

货号: **AYP19885**

## 产品信息

反应	Human
宿主	Rabbit
克隆性	Polyclonal
预测反应	
应用	WB
推荐浓度	<b>WB:</b> 1:500 - 1:2000
理论分子量	12kDa
实测分子量	14kDa
形式	Liquid
保存条件	Store at -20°C. Avoid freeze / thaw cycles. Buffer: PBS with 0.01% thiomersal, 50% glycerol, pH 7.3.
偶联物	Unconjugated
阳性对照	HeLa, Jurkat, K-562
细胞定位	Golgi apparatus, Golgi apparatus membrane, Single-pass type IV membrane protein, trans-Golgi network membrane
纯化	Affinity purification

## 抗原信息

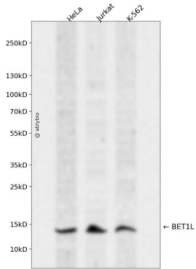
抗原信息	Recombinant fusion protein containing a sequence corresponding to amino acids 1-60 of human BET1L (NP_057610.2).
序列	MADWARAQSPGAVEEILDRENKRMADSLASKVTRLKSLALDIDRDAEDQNRYLDGMVRAH

## 靶点信息

研究背景	Vesicle SNARE required for targeting and fusion of retrograde transport vesicles with the Golgi complex. R required for the integrity of the Golgi complex (By similarity).
基因ID	51272
基因名	BET1L

<b>Swiss</b>	Q9NYM9
别名	BET1L;BET1L1;GOLIM3;GS15;HSPC197

## 产品验证



Western blot analysis of BET1L expressed in HeLa, Jurkat, K-562 using BET1L Rabbit pAb at 1:1000. Secondary antibody: HRP Goat Anti-Rabbit IgG (H+L) at 1:5000. Lysates/proteins: 30ug per lane. Blocking buffer: 5% non-fat dry milk in TBST. Detection: ECL Enhanced Kit. Exposure time: 120s.

## 实验步骤

访问官网浏览详情: [www.ablybio.cn](http://www.ablybio.cn)